

**Cleco**<sup>®</sup>  
Production Tools

# Material Removal

SOLUTIONS ARE IN OUR DNA.







**Solutions are in our DNA.**

# Table of Contents.



## About Cleco<sup>®</sup> Tools 04

Since inception, Cleco has grown to become a global manufacturing solutions provider, headquartered in the United States, with locations across North America, Europe and Asia.

## Material Removal 165

Grinders	168
Sanders & Polishers	207
Specialty Tools	219

## Cleco Care 304

Cleco Care provides a wide range of continued technical support and product expertise around the globe. Our Cleco Care Global Service Centers are committed to providing data-driven customer solutions to reduce total cost of ownership and down-time on your line.

# Manufacturing and delivering world-class assembly solutions for over 120 years.



**Founded in 1894** as Cleveland Pneumatic Tool Company in Cleveland, Ohio.

Since inception, Cleco has grown to become a global manufacturing solutions provider, headquartered in the United States, with locations across North America, Europe and Asia. As our product offerings expanded globally, we transitioned trusted and recognized brands for fixtured assembly solutions (DGD) and material removal and drilling (Master Power, Recoules Quackenbush and Dotco) to our Cleco Production Tools brand umbrella. Combining our brands enhances our extensive history as a solutions provider, while providing clarity and an improved experience for our customers.

**Cleco Production Tools is more than just a tool company. We are a global support partner focused on building long-term relationships with our customers.**

**Our mission is to be a solution-driven partner that consistently turns obstacles into opportunities. We deliver smart tool solutions for every industrial and manufacturing challenge.**

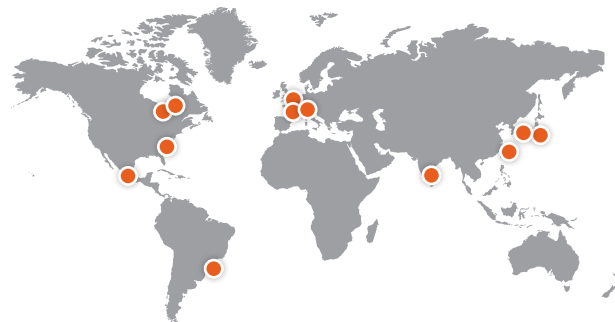
Throughout our over 120-year history, we have provided innovative tool solutions for the following industries:

- Automotive
- Aerospace
- Appliances, Electronics & Industrial Assembly
- Agriculture & Off-Road
- Oil, Gas & Petrochemical



Using **advanced** technology for industry-leading tool solutions.

Our advanced tool and assembly solutions enhance user experience and increase productivity, providing powerful results for your company. We leverage new technology to increase tool accuracy, traceability, ergonomics and safety.



Quality production tools for **every** industry.

As a leading tool manufacturer, Cleco offers trusted tool solutions across numerous industries. Whether your company constructs high-tech automobiles, assembles planes for leading aviation projects, produces appliances or builds earth-moving equipment, you can count on Cleco Production Tools for intelligent assemblies and world-class tools.

**North America**

**Detroit, Michigan**  
2630 Superior Court  
Auburn Hills, MI 48236  
United States  
1 (248) 391-3700

**Lexington, South Carolina**  
670 Industrial Drive  
Lexington, SC 29072  
United States  
1 (800) 845-5629  
1 (803) 951-7510

**Queretaro, Mexico**  
Vialidad Del Pueblito 103  
Parque Industrial  
Querétaro, QRO 76220  
Mexico  
52 (442) 211 3800

**Mississauga, Canada**  
7631 Bath Road  
Mississauga L4T 3T1  
Canada  
(866) 691-6212

**South America**

**Sao Paulo, Brazil**  
Avenida Liberdade 4055  
Iporanga-Sorocaba  
Sao Paulo 18087-170  
Brazil  
55 15 3238 3870

**Europe**

**Piccadilly, England**  
C/O Spline Guages  
Piccadilly, Tamworth  
Staffordshire B78 2ER  
United Kingdom  
44 1827 8727 71

**Ozoir-La-Ferriere, France**  
25 Avenue Maurice Chevalier  
Ozoir-La-Ferriere Cedex  
77330  
France  
33 1 64 43 22 00

**Westhausen, Germany**  
Industriestraße 1  
73463 Westhausen  
Germany  
49 (0) 73 63 81 0

**Asia Pacific**

**Shanghai, China**  
No. 177 Bibo Road  
201, Area C  
Pu Dong New Area, Shanghai  
China 201203 P.R.C.  
86 21 60880320

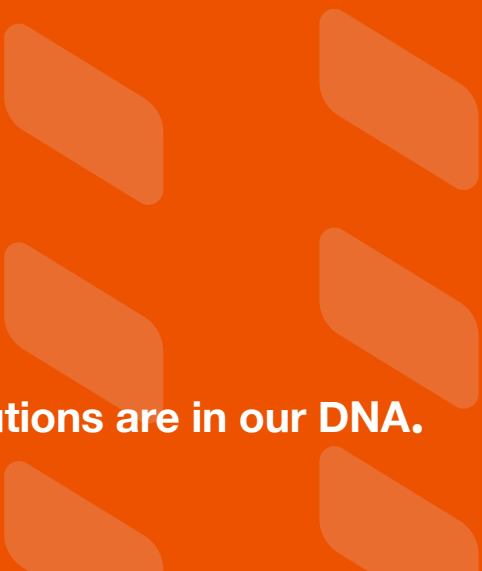
**Albury, Australia**  
519 Nurigong Street, Albury  
NSW 2640  
Australia  
61 2 6058 0300

**Pune, India**  
Gala No. 1, Plot No. 5 S. No.  
234, 235 & 245  
Indialand Global Industrial  
Taluka-Mulsi, Phase I  
Hinjawadi, Pune 411057  
Maharashtra  
India  
91 020 66761111

**Tokyo, Japan**  
Korin-Kaikan 5F  
3-6-23 Shibakoen  
Minato-Ku, Tokyo 105-0011  
Japan  
81-3-6450-1840

**Seoul, Korea**  
#1503, Hibrand Living Bldg.  
215 Yangjae-dong  
Seocho-gu, Seoul 137-924  
Korea  
82-2-2155-0250





**Solutions are in our DNA.**



## Designed for operators. Built for production.



Use top-quality, precision components  
and motor assemblies to deliver  
**unmatched productivity.**

Manufactured from the finest materials available, Cleco tools deliver efficiency and precision. When it comes to fine finishing applications such as die grinding and de-burring, no tools are better suited for the job than Cleco grinders. Our reputation for durability, dependability and versatility is among the highest for fine finishing applications. Designed for the toughest work environments, Cleco material removal tools are built for you industry's most demanding projects.





## Designed for operator **comfort** and **productivity**.

Cleco grinders are designed with the operator in mind: small, lightweight and comfortable to use, without sacrificing durability. Plus, they incorporate elastomer coatings, and perfectly balanced moving parts to keep vibration to a minimum. This optimal combination of tool characteristics allows the operator to focus on doing the best job possible, in the least amount of time.

## With **interchangeable parts**, you can rely on a single tool for a range of industrial applications.

We design versatile tools with interchangeable parts to make our products more affordable, easier to repair, and faster to use. Cleco's Dotco sanders, buffers and polishers are available in a variety of styles and power ratings to provide flexibility in choosing the best tool for the job. Disc sanding and polishing, wire brushes, buffing wheels, abrasive sheets, woven or non-woven belts. No matter the application, we have a quality tool solution.



## **High performance** for high-volume, high-repetition tasks.

Cleco's Dotco drills have long been the industry workhorse for daily high-volume, high-precision use in applications ranging from appliances to aerospace manufacturing.

Be it aluminum, steel, titanium, composite, or wood, many industries require hand-drilled holes, and Cleco's Dotco tools offer some of the industry's most durable and reliable hand-held drills, available in pistol, angle and in-line configurations.





## 10-90 Series - Precision Grinder - Turbine - Cleco Dotco

100,000 RPM 0.06 hp (0.044 kW)



- Requires no air line lubrication - High precision ball bearings for long life expectancy
- Two-stage turbine motor with roll throttle
- Achieves a superb finish with its high speed and precision spindle
- Light weight and durable aluminum housing
- Low vibration and quiet operation minimizes operator fatigue

MODEL	COLLET SIZE	EXHAUST	FREE SPEED	ABRASIVE CAPACITY GRINDER	TYPE HOUSING	WEIGHT	LENGTH	AIR INLET SIZE
			R/MIN			LB	IN	IN
10R9000-03	3 MM	FRONT	100000	3/16" CARBIDE BURR, 3/16" DIAMOND PIN	ALUMINUM	0.441	5.4	1/8
10R9000-08	1/8 IN	FRONT	100000	3/16" CARBIDE BURR, 3/16" DIAMOND PIN	ALUMINUM	0.441	5.4	1/8

CAUTION: Use dry air at 90 psi maximum: Do not lubricate turbine grinders. Lubrication will be detrimental to the operation and life of turbine tools. Do not attach a quick-disconnect fitting directly to the tool.  
Standard Equipment: Applicable collet, collet wrenches, 7 ft./2.1 m air supply hose, replaceable cartridge hose filter.

## 10-95 Series - Precision Grinder - Turbine - Cleco Dotco

80,000 RPM 0.1 hp (0.074 kW)



- Requires no air line lubrication - High precision ball bearings for long life expectancy
- Maximizes productivity with two-stage turbine motor
- Achieves a superb finish with its high speed and precision spindle
- Light weight and durable aluminum housing
- Low vibration and quiet operation minimizes operator fatigue

MODEL	COLLET SIZE	EXHAUST	FREE SPEED	ABRASIVE CAPACITY GRINDER	TYPE HOUSING	WEIGHT	LENGTH	AIR INLET SIZE
			R/MIN			LB	IN	IN
10L9500-36	1/8 IN	FRONT	80000	1/4" CARBIDE BURR, 3/16" DIAMOND PIN	ALUMINUM	1.98	5.8	1/4
10N9500-36*	1/8 IN	FRONT	80000	1/4" CARBIDE BURR, 3/16" DIAMOND PIN	ALUMINUM	1.98	5.8	1/4
10N9500-36M3*	3 MM	FRONT	80000	1/4" CARBIDE BURR, 3/16" DIAMOND PIN	ALUMINUM	1.98	5.8	1/4

CAUTION: Use dry air at 90 psi maximum: Do not lubricate turbine grinders. Lubrication will be detrimental to the operation and life of turbine tools. Do not attach a quick-disconnect fitting directly to the tool.  
Standard Equipment: Applicable collet, collet wrenches, 8 ft./2.4 m air supply hose, built-in air filter, speed regulator  
\* Tool will start with applied air, intended for fixtured applications

## 12R91 Series - Precision Grinder - Governed - Turbine

65,000 RPM 0.1 hp (0.074 kW)



- Requires no air line lubrication - High precision ball bearings for long life expectancy
- Two-stage turbine motor with roll throttle
- Achieves a superb finish with its high speed and precision spindle
- Light weight and durable composite housing
- Low vibration and quiet operation minimizes operator fatigue

MODEL	COLLET SIZE	EXHAUST	FREE SPEED	ABRASIVE CAPACITY GRINDER	TYPE HOUSING	OVERHOSE	WEIGHT	LENGTH	AIR INLET SIZE
			R/MIN				LB	IN	IN
12R9180-03	3 MM	REAR	65000	1/8" CARBIDE BURR, 1/8" DIAMOND PIN	COMPOSITE	2 FT   0.6 M	0.441	5.8	1/8
12R9180-08	1/8 IN	REAR	65000	1/8" CARBIDE BURR, 1/8" DIAMOND PIN	COMPOSITE	2 FT   0.6 M	0.441	5.8	1/8
12R9180-43	3 MM	REAR	65000	1/8" CARBIDE BURR, 1/8" DIAMOND PIN	COMPOSITE	4 FT   1.2 M	0.441	5.8	1/8
12R9180-48	1/8 IN	REAR	65000	1/8" CARBIDE BURR, 1/8" DIAMOND PIN	COMPOSITE	4 FT   1.2 M	0.441	5.8	1/8

CAUTION: Use dry air at 90 psi maximum: Do not lubricate turbine grinders. Lubrication will be detrimental to the operation and life of turbine tools.

Do not attach a quick-disconnect fitting directly to the tool.

Standard Equipment: Applicable collet, collet wrenches, collet guard, 5 ft./1.5m air supply hose

## 12-03 Series - Precision Grinder - Gearless - Right Angle - Cleco Dotco

80,000 RPM 0.1 hp (0.074 kW)



- Industrial bearing provides long life expectancy
- Designed for precision deburring and metal removal
- Compact and light weight composite housing
- Roll throttle equipped
- Includes over-hose

MODEL	COLLET SIZE	EXHAUST	FREE SPEED	ABRASIVE CAPACITY GRINDER	TYPE HOUSING	OVERHOSE	WEIGHT	LENGTH	AIR INLET SIZE
			R/MIN				LB	IN	IN
12R0380-13	3 MM	REAR	80000	1/4" CARBIDE BURR, 1/4" DIAMOND PIN	COMPOSITE	1 FT   0.3 M	0.3	5.5	1/8
12R0380-18	1/8 IN	REAR	80000	1/4" CARBIDE BURR, 1/4" DIAMOND PIN	COMPOSITE	1 FT   0.3 M	0.220	5.5	1/8
12R0380-43	3 MM	REAR	80000	1/4" CARBIDE BURR, 1/4" DIAMOND PIN	COMPOSITE	4 FT   1.2 M	0.220	5.5	1/8

Do not attach a quick-disconnect fitting directly to the tool.

Standard Equipment: Applicable collet, collet wrenches, collet guard, 5 ft./1.5 m air supply hose, 1 ft./0.3 m overhose



## 10-04 Series - Precision Grinder - Inline - Cleco Dotco

60,000 RPM 0.1 hp (0.074 kW)



- Industrial bearing provides long life expectancy
- Designed for precision deburring and metal removal
- Compact and light aluminum weight housing
- Roll throttle equipped

MODEL	COLLET SIZE	EXHAUST	FREE SPEED	OVERHOSE	ABRASIVE CAPACITY GRINDER	WEIGHT	LENGTH	AIR INLET SIZE	COLLET GUARD
			R/MIN			LB	IN	IN	
10R0400-13	3 MM	REAR	60000	1 FT   0.3 M	1/4" CARBIDE BURR, 1/4" DIAMOND PIN	0.220	5.8	1/8	WITHOUT
10R0400-18	1/8 IN	REAR	60000	1 FT   0.3 M	1/4" CARBIDE BURR, 1/4" DIAMOND PIN	0.220	5.8	1/8	WITHOUT
10R0401-13	3 MM	REAR	60000	1 FT   0.3 M	1/4" CARBIDE BURR, 1/4" DIAMOND PIN	0.220	5.8	1/8	WITH
10R0401-16	3/32 IN	REAR	60000	1 FT   0.3 M	1/4" CARBIDE BURR, 1/4" DIAMOND PIN	0.220	5.8	1/8	WITH
10R0401-18	1/8 IN	REAR	60000	1 FT   0.3 M	1/4" CARBIDE BURR, 1/4" DIAMOND PIN	0.220	5.8	1/8	WITH
10R0401-43	3 MM	REAR	60000	4 FT   1.2 M	1/4" CARBIDE BURR, 1/4" DIAMOND PIN	0.220	5.8	1/8	WITH
10R0412-18	1/8 IN	REAR	60000	1 FT   0.3 M	1/4" CARBIDE BURR, 1/4" DIAMOND PIN	0.220	6.2	1/8	WRENCHLESS CHUCK
10R0414-43	3 MM	REAR	60000	4 FT   1.2 M	1/4" CARBIDE BURR, 1/4" DIAMOND PIN	0.220	5.8	1/8	WITH

Do not attach a quick-disconnect fitting directly to the tool.

Standard Equipment: Applicable collet, collet wrenches, collet guard, 5 ft/1.5 m air supply hose, 1 ft./0.3 m overhose

## 12-04 Series - Precision Grinder - Inline - Cleco Dotco

60,000 RPM 0.1 hp (0.074 kW)



- Industrial bearing provides long life expectancy
- Designed for precision deburring and metal removal
- Compact and light weight composite housing
- Roll throttle equipped

MODEL	COLLET SIZE	EXHAUST	FREE SPEED	OVERHOSE	ABRASIVE CAPACITY GRINDER	WEIGHT	LENGTH	AIR INLET SIZE	COLLET GUARD
			R/MIN			LB	IN	IN	
12R0400-13	3 MM	REAR	60000	1 FT   0.3 M	1/4" CARBIDE BURR, 1/4" DIAMOND PIN	0.220	5.8	1/8	SHORT
12R0400-18	1/8 IN	REAR	60000	1 FT   0.3 M	1/4" CARBIDE BURR, 1/4" DIAMOND PIN	0.220	5.8	1/8	SHORT
12R0400-43	3 MM	REAR	60000	4 FT   1.2 M	1/4" CARBIDE BURR, 1/4" DIAMOND PIN	0.220	5.8	1/8	SHORT
12R0410-13	3 MM	REAR	60000	1 FT   0.3 M	1/4" CARBIDE BURR, 1/4" DIAMOND PIN	0.220	5.8	1/8	LONG
12R0410-16	3/32 IN	REAR	60000	1 FT   0.3 M	1/4" CARBIDE BURR, 1/4" DIAMOND PIN	0.220	5.8	1/8	LONG
12R0410-18	1/8 IN	REAR	60000	1 FT   0.3 M	1/4" CARBIDE BURR, 1/4" DIAMOND PIN	0.220	5.8	1/8	SHORT
12R0410-43	3 MM	REAR	60000	4 FT   1.2 M	1/4" CARBIDE BURR, 1/4" DIAMOND PIN	0.220	5.8	1/8	SHORT

Do not attach a quick-disconnect fitting directly to the tool.

Standard Equipment: Applicable collet, collet wrenches, collet guard, 5 ft/1.5 m air supply hose, 1 ft./0.3 m overhose

## MP42 Series Pencil Grinders

70,000 RPM 0.06 hp (0.044 kW)



Grinders

- Ideal for precision deburring, blending and smoothing applications
- Lightweight, ergonomically designed to be virtually vibration free
- Rear exhaust directs air away from work
- Standard with 5 ft air hose and 1 ft overhose
- Ideal for tight spots
- Slim comfortable design with ergonomic grip for operator comfort
- Double bearings for increased durability on MP4200 inline
- Includes both 1/8 in and 3 mm collets

MODEL	TOOL CONFIGURATION	COLLET SIZE	EXHAUST	FREE SPEED	ABRASIVE CAPACITY GRINDER	TYPE HOUSING	OVERHOSE	WEIGHT	LENGTH	AIR INLET SIZE
				R/MIN				LB	IN	IN
MP4200	INLINE	1/8 IN	REAR	70000	1/4" CARBIDE BURR, 1/4" DIAMOND PIN	ALUMINUM	1 FT   0.3 M	0.441	5.4	1/8
MP4201	RIGHT ANGLE	1/8 IN	REAR	70000	1/4" CARBIDE BURR, 1/4" DIAMOND PIN	ALUMINUM	1 FT   0.3 M	0.441	5.9	1/8

General: Air Inlet 1/4" NPT. Use 1/4" (6.4 mm) I.D. hose. All tools performance rated @ 90psi (620 kPa) air pressure.

Optional:

MP4200 - 70617600 1/8" collet kit (5 pcs.), 70620200PT - 3mm collet kit (5 pcs.)

MP4201 - 70618800 1/8" collet kit (5 pcs.), 70620400PT - 3mm collet kit (5 pcs.)

## 220G Series - Precision Grinder - Push-Pull Start

60,000 RPM 0.1 hp (0.74 kW)



- Industrial bearing provides long life expectancy
- Designed for precision deburring and metal removal
- Compact and light weight housing
- Available in a kit with a complete set of accessories

MODEL	COLLET SIZE	EXHAUST	FREE SPEED	ABRASIVE CAPACITY GRINDER	TYPE HOUSING	WEIGHT	LENGTH	AIR INLET SIZE
			R/MIN			LB	IN	IN
220G-600-C2	1/8 IN	FRONT	60000	1/4" CARBIDE BURR	ALUMINUM	0.220	4.60	1/8
220G-600-C2-K*		FRONT	60000	1/4" CARBIDE BURR	ALUMINUM	0.441	4.60	1/8

Standard Equipment: Applicable collet, collet wrenches, 8 ft./2.4m air supply hose, built-in air filter, speed regulator

\* Kit includes grinder, hose, collet, collet wrench, cylindrical plain burr 413680, cylindrical radius end burr 413681, cone & taper burr 413682, and tree point burr 413683, carrying case.



## 18 Series - Steel

50,000 RPM 0.1 hp (0.074 kW)



- Industrial bearing provides long life expectancy
- Designed for precision deburring and metal removal
- Compact and light weight housing
- Available in a kit with a complete set of accessories

MODEL	COLLET SIZE	EXHAUST	ABRASIVE CAPACITY GRINDER	TYPE HOUSING	WEIGHT	LENGTH	AIR INLET SIZE
					LB	IN	IN
18G-810D	1/4 IN	FRONT	1/4" CARBIDE BURR, 1/2" MOUNTED WHEEL	STEEL	0.88	5.9	1/8
18G-810D-08	1/8 IN	FRONT	1/4" CARBIDE BURR, 1/2" MOUNTED WHEEL	STEEL	0.88	5.9	1/8

Use dry air at 90psi maximum: Do not lubricate turbine grinders. Lubrication will be detrimental to the operation and life of turbine tools. Do not attach a quick-disconnect fitting directly to the tool.

Standard Equipment: 1/4" collet - 7808, Nosepiece - 1011790, 7/16" Spindle Wrench - 1011691, 11/16" Collet Nut Wrench - 1014472

## 15Z Series - Air Marking Pen - Cleco Dotco

20,000 RPM 0.06 hp (0.044 kW)



- Sliding sleeve throttle
- Ideal for marking a variety of materials, ranging from Aluminum to Titanium
- Carbide tipped stylus
- Weighs only 4 oz | 113 grams

MODEL	FREE SPEED	ABRASIVE CAPACITY	WEIGHT	AIR INLET SIZE	LENGTH	DIAMETER
	R/MIN		LB	IN	IN	IN
15Z-710	20000	1/8" STYLUS	0.220	1/4	5.5	0.6

Do not attach a quick-disconnect fitting directly to the tool.

Standard Equipment: Carbide tipped stylus

## 15Z Series - Air Marking Pen Kit

20,000 RPM 0.06 hp (0.044 kW)



- Includes 15Z-710 air marking pen
- 5' (1.5m) air hose assembly
- 3/16" ID with 1/8" NPT fittings
- Includes two 1/2" wrenches
- Durable and convenient carrying case

MODEL	FREE SPEED	ABRASIVE CAPACITY	WEIGHT	AIR INLET SIZE	LENGTH	DIAMETER
	R/MIN		LB	IN	IN	IN
15Z-720	20000	1/8" STYLUS	0.441	1/4	5.5	0.6

Do not attach a quick-disconnect fitting directly to the tool.

Standard Equipment: Carbide tipped stylus

## 12-05 Series - Precision Grinder- with Collet Guard - Cleco Dotco

40,000 RPM 0.2 hp (0.15 kW)



Grinders

- Robust design have been continuously improved for six decades
- Compact size for ultimate control - easy access to confined areas
- Ideal for die and mold work as well as deburring
- Comprehensive selection of speed available
- Equipped with dial throttle

MODEL	COLLET SIZE	EXHAUST	FREE SPEED	ABRASIVE CAPACITY GRINDER	TYPE HOUSING	WEIGHT	LENGTH	AIR INLET SIZE
			R/MIN			LB	IN	IN
12R0500-36	1/4 IN	FRONT	40000	1/4" CARBIDE BURR, 7/8" MOUNTED WHEEL	COMPOSITE	0.66	5.9	1/8

All tools performance rated @ 90psi / 620 kPa air pressure.  
Minimum Hose I.D.: 3/16in / 4.8mm

Standard Equipment: Applicable collet, collet wrenches, collet guard, 7 ft / 2.1m air supply hose

## 12-10 Series - Die Grinder - 300 Series Collet - Cleco Dotco

12,000 - 34,000 RPM 0.3 hp (0.22 kW)



- Durable and ergonomic composite housing
- Compact size for ultimate control - easy access to confined areas
- Ideal for die and mold work as well as deburring
- Comprehensive selection of speed available
- Standard equipped with lock-off lever

MODEL	COLLET SIZE	EXHAUST	FREE SPEED	ABRASIVE CAPACITY GRINDER	TYPE HOUSING	WEIGHT	LENGTH	AIR INLET SIZE
			R/MIN			LB	IN	IN
12L1045-36	1/4 IN	FRONT	12000	1/2" CARBIDE BURR, 1" MOUNTED WHEEL	COMPOSITE	0.88	6.0	1/4
12L1045-36M6*	1/4 IN   6 MM	FRONT	12000	1/2" CARBIDE BURR, 1" MOUNTED WHEEL	COMPOSITE	0.88	6.0	1/4
12L1046-36	1/4 IN	FRONT	18000	1/2" CARBIDE BURR, 1" MOUNTED WHEEL	COMPOSITE	0.88	6.0	1/4
12L1028-36	1/4 IN	REAR	20000	1/2" CARBIDE BURR, 1" MOUNTED WHEEL	COMPOSITE	0.88	6.0	1/4
12L1028-36M6*	1/4 IN   6 MM	REAR	20000	1/2" CARBIDE BURR, 1" MOUNTED WHEEL	COMPOSITE	0.88	6.0	1/4
12L1003-36	1/4 IN	FRONT	25000	1/2" CARBIDE BURR, 1" MOUNTED WHEEL	COMPOSITE	0.88	6.0	1/4
12L1082-36	1/4 IN	REAR	25000	1/2" CARBIDE BURR, 1" MOUNTED WHEEL	COMPOSITE	0.88	6.0	1/4
12L1082-36M6*	1/4 IN   6 MM	REAR	25000	1/2" CARBIDE BURR, 1" MOUNTED WHEEL	COMPOSITE	0.88	6.0	1/4
12L1000-36	1/4 IN	FRONT	30000	1/2" CARBIDE BURR, 1" MOUNTED WHEEL	COMPOSITE	0.88	6.0	1/4
12L1000-36M6*	1/4 IN   6 MM	FRONT	30000	1/2" CARBIDE BURR, 1" MOUNTED WHEEL	COMPOSITE	0.88	6.0	1/4

All tools performance rated @ 90 psi / 620 kPa air pressure.

Standard Equipment: Applicable collet, collet wrenches

Minimum Hose I.D.: 1/4 in / 6.4 mm

\* -36M6 includes both 1/4" Collet and 6 mm Collet. -36M6OH termination includes both 1/4" Collet and 6 mm Collet and overhose

MODEL	COLLET SIZE	EXHAUST	FREE SPEED	ABRASIVE CAPACITY GRINDER	TYPE HOUSING	WEIGHT	LENGTH	AIR INLET SIZE
			R/MIN			LB	IN	IN
12L1080-36	1/4 IN	REAR	30000	1/2" CARBIDE BURR, 1" MOUNTED WHEEL	COMPOSITE	0.88	6.0	1/4
12L1080-36M6*	1/4 IN   6 MM	REAR	30000	1/2" CARBIDE BURR, 1" MOUNTED WHEEL	COMPOSITE	0.88	6.0	1/4
12L1080-36M6OH*	1/4 IN   6 MM	REAR	30000	1/2" CARBIDE BURR, 1" MOUNTED WHEEL	COMPOSITE	0.88	6.0	1/4
12L1001-36	1/4 IN	FRONT	34000	1/2" CARBIDE BURR, 1" MOUNTED WHEEL	COMPOSITE	0.88	6.0	1/4
12L1081-36	1/4 IN	REAR	34000	1/2" CARBIDE BURR, 1" MOUNTED WHEEL	COMPOSITE	0.88	6.0	1/4
12L1081-36M6OH*	1/4 IN   6 MM	REAR	34000	1/2" CARBIDE BURR, 1" MOUNTED WHEEL	COMPOSITE	0.88	6.0	1/4
12S1008-36	1/4 IN	FRONT	20000	1/2" CARBIDE BURR, 1" MOUNTED WHEEL	COMPOSITE	0.88	6.0	1/4

All tools performance rated @ 90 psi / 620 kPa air pressure.

Standard Equipment: Applicable collet, collet wrenches

Minimum Hose I.D.: 1/4 in / 6.4 mm

\* -36M6 includes both 1/4" Collet and 6 mm Collet. -36M6OH termination includes both 1/4" Collet and 6 mm Collet and overhose

## 10-10 Series - Die Grinder - 200 & 300 Series Collet - Cleco Dotco

25,000 - 34,000 RPM 0.3 hp (0.22 kW)



- Durable aluminum housing
- Compact size for ultimate control - easy access to confined areas
- Ideal for die and mold work as well as deburring
- Comprehensive selection of speed available

MODEL	COLLET SIZE	EXHAUST	FREE SPEED	ABRASIVE CAPACITY GRINDER	TYPE HOUSING	WEIGHT	LENGTH	AIR INLET SIZE
			R/MIN			LB	IN	IN
10L1003-36	1/4 IN	FRONT	25000	1/2" CARBIDE BURR, 1" MOUNTED WHEEL	ALUMINUM	0.66	4.60	1/4
10L1082-36	1/4 IN	REAR	25000	1/2" CARBIDE BURR, 1" MOUNTED WHEEL	ALUMINUM	0.66	4.60	1/4
10L1000-36	1/4 IN	FRONT	30000	1/2" CARBIDE BURR, 1" MOUNTED WHEEL	ALUMINUM	0.66	4.60	1/4
10L1080-36	1/4 IN	REAR	30000	1/2" CARBIDE BURR, 1" MOUNTED WHEEL	ALUMINUM	0.66	4.60	1/4
10L1097-36	1/4 IN	REAR	30000	1/2" CARBIDE BURR, 1" MOUNTED WHEEL	ALUMINUM WITH BAIL	0.66	4.60	1/4
10N1080-01*	1/4 IN	REAR	30000	1/2" CARBIDE BURR, 1" MOUNTED WHEEL	ALUMINUM	0.66	4.60	1/4
10L1001-36	1/4 IN	FRONT	34000	1/2" CARBIDE BURR, 1" MOUNTED WHEEL	ALUMINUM	0.66	4.60	1/4
10L1081-36	1/4 IN	REAR	34000	1/2" CARBIDE BURR, 1" MOUNTED WHEEL	ALUMINUM	0.66	4.60	1/4
10N1081-36*	1/4 IN	REAR	34000	1/2" CARBIDE BURR, 1" MOUNTED WHEEL	ALUMINUM	0.66	4.60	1/4

All tools performance rated @ 90 psi / 620 kPa air pressure.

Standard Equipment: Applicable collet, collet wrenches

Minimum Hose I.D.: 1/4 in / 6.4 mm

\* Tool will start with applied air, intended for fixtured applications



## 12-20 Series - Die Grinder - 200 Series Collet - Cleco Dotco

12,000 - 25,000 RPM 0.6 hp (0.45 kW)



Grinders

- Ergonomic composite housing
- Front and rear exhaust models available
- Designed to work comfortably with the operator
- Standard equipped with 200 series collet

MODEL	COLLET SIZE	EXHAUST	FREE SPEED	ABRASIVE CAPACITY GRINDER	TYPE HOUSING	WEIGHT	LENGTH	AIR INLET SIZE
			R/MIN			LB	IN	IN
12L2003-01	1/4 IN	FRONT	12000	3/4" CARBIDE BURR, 1.5" MOUNTED WHEEL	COMPOSITE	1.32	6.9	1/4
12L2002-01	1/4 IN	FRONT	18000	3/4" CARBIDE BURR, 1.5" MOUNTED WHEEL	COMPOSITE	1.32	6.9	1/4
12L2001-01	1/4 IN	FRONT	20000	3/4" CARBIDE BURR, 1.5" MOUNTED WHEEL	COMPOSITE	1.32	6.9	1/4
12L2081-01	1/4 IN	REAR	20000	3/4" CARBIDE BURR, 1.5" MOUNTED WHEEL	COMPOSITE	1.32	6.9	1/4
12L2081-01M6*	1/4 IN   6 MM	REAR	20000	3/4" CARBIDE BURR, 1.5" MOUNTED WHEEL	COMPOSITE	1.32	6.9	1/4
12L2081-01M6OH*	1/4 IN   6 MM	REAR	20000	3/4" CARBIDE BURR, 1.5" MOUNTED WHEEL	COMPOSITE	1.32	6.9	1/4
12L2000-01	1/4 IN	FRONT	25000	3/4" CARBIDE BURR, 1.5" MOUNTED WHEEL	COMPOSITE	1.32	6.9	1/4
12L2080-01	1/4 IN	REAR	25000	3/4" CARBIDE BURR, 1.5" MOUNTED WHEEL	COMPOSITE	1.32	6.9	1/4
12L2080-01M6*	1/4 IN   6 MM	REAR	25000	3/4" CARBIDE BURR, 1.5" MOUNTED WHEEL	COMPOSITE	1.32	6.9	1/4
12L2082-01	1/4 IN	REAR	18000	3/4" CARBIDE BURR, 1.5" MOUNTED WHEEL	COMPOSITE	1.32	6.9	1/4

All tools performance rated @ 90psi / 620 kPa air pressure.

Standard Equipment: Applicable collet, collet wrenches

Minimum Hose I.D.: 1/4in / 6.4mm

\* -36M6 includes both 1/4" Collet and 6 mm Collet. -36M6OH termination includes both 1/4" Collet and 6 mm Collet and overhose. -01M6 includes both 1/4" Collet and 6 mm Collet. -01M6OH termination includes both 1/4" Collet and 6 mm Collet and overhose.

## 10-20 Series - Die Grinder - 200 & 300 Series Collet - Cleco Dotco

18,000 - 25,000 RPM 0.6 hp (0.45 kW)



- Durable aluminum housing
- Front, side, and rear exhaust models available
- Designed to work comfortably with the operator

MODEL	COLLET SIZE	EXHAUST	FREE SPEED	ABRASIVE CAPACITY GRINDER	TYPE HOUSING	WEIGHT	LENGTH	AIR INLET SIZE
			R/MIN			LB	IN	IN
10L2002-36	1/4 IN	FRONT	18000	3/4" CARBIDE BURR, 1.5" MOUNTED WHEEL	ALUMINUM	1.32	6.6	1/4
10L2082-01	1/4 IN	REAR	18000	3/4" CARBIDE BURR, 1.5" MOUNTED WHEEL	ALUMINUM	1.32	6.6	1/4
10L2005-01	1/4 IN	FRONT	20000	3/4" CARBIDE BURR, 1.5" MOUNTED WHEEL	ALUMINUM	1.32	5.7	1/4

All tools performance rated @ 90 psi / 620 kPa air pressure.

Standard Equipment: Applicable collet, collet wrenches

Termination -01 = 200 Series collet

Termination -36 = 300 series collet

\* -36M6 includes both 1/4" Collet and 6 mm Collet. -36M6OH termination includes both 1/4" Collet and 6 mm Collet and overhose. -01M6 includes both 1/4" Collet and 6 mm Collet. -01M6OH termination includes both 1/4" Collet and 6 mm Collet and overhose.

\*\* Tool will start with applied air, intended for fixtured applications

MODEL	COLLET SIZE	EXHAUST	FREE SPEED	ABRASIVE CAPACITY GRINDER	TYPE HOUSING	WEIGHT	LENGTH	AIR INLET SIZE
			R/MIN			LB	IN	IN
10L2081-01	1/4 IN	REAR	20000	3/4" CARBIDE BURR, 1.5" MOUNTED WHEEL	ALUMINUM	1.32	5.8	1/4
10L2081-01M6*	1/4 IN   6 MM	REAR	20000	3/4" CARBIDE BURR, 1.5" MOUNTED WHEEL	ALUMINUM	1.32	5.8	1/4
10L2000-01	1/4 IN	FRONT	25000	3/4" CARBIDE BURR, 1.5" MOUNTED WHEEL	ALUMINUM	1.32	5.8	1/4
10L2000-36	1/4 IN	FRONT	25000	3/4" CARBIDE BURR, 1.5" MOUNTED WHEEL	ALUMINUM	1.10	6.4	1/4
10L2080-01	1/4 IN	REAR	25000	3/4" CARBIDE BURR, 1.5" MOUNTED WHEEL	ALUMINUM	1.32	5.8	1/4
10L2080-01M6*	1/4 IN   6 MM	REAR	25000	3/4" CARBIDE BURR, 1.5" MOUNTED WHEEL	ALUMINUM	1.32	5.8	1/4
10L2080-36	1/4 IN	REAR	25000	3/4" CARBIDE BURR, 1.5" MOUNTED WHEEL	ALUMINUM	1.32	6.4	1/4
10N2080-01**	1/4 IN	REAR	25000	3/4" CARBIDE BURR, 1.5" MOUNTED WHEEL	ALUMINUM	1.32	5.8	1/4

All tools performance rated @ 90 psi / 620 kPa air pressure.

Standard Equipment: Applicable collet, collet wrenches Minimum Hose I.D.: 5/16 in / 7.9 mm

Termination -01 = 200 Series collet

Termination -36 = 300 series collet

\* -36M6 includes both 1/4" Collet and 6 mm Collet. -36M6OH termination includes both 1/4" Collet and 6 mm Collet and overhose. -01M6 includes both 1/4" Collet and 6 mm Collet. -01M6OH termination includes both 1/4" Collet and 6 mm Collet and overhose.

\*\* Tool will start with applied air, intended for fixtured applications

## 216 Series - 200 Series Collet

25,000 RPM 0.7 hp (0.45 kW)



- Designed for demands of heavy industries, such as shipbuilding, foundries, metal fabrication, etc.
- Rugged advanced alloy housing
- Front and side exhaust models available

MODEL	COLLET SIZE	EXHAUST	FREE SPEED	ABRASIVE CAPACITY GRINDER	TYPE HOUSING	WEIGHT	LENGTH	AIR INLET SIZE
			R/MIN			LB	IN	IN
216GLFB-250-C4	1/4 IN	FRONT	25000	3/4" CARBIDE BURR	ALUMINUM	1.32	0.63	1/4
216GLSB-250-C4	1/4 IN	SIDE	25000	3/4" CARBIDE BURR	ALUMINUM	1.32	0.63	1/4

All tools performance rated @ 90psi / 620 kPa air pressure.

Standard Equipment: Applicable collet, collet wrenches

Minimum Hose I.D.: 1/4in / 6.4mm

## 236 Series - 200 Series Collet

18,000 - 25,000 RPM 0.6 hp (0.45 kW)



- Designed for demands of heavy industries, such as shipbuilding, foundries, metal fabrication, etc.
- Durable advanced alloy housing
- Front, side, and rear exhaust models available

MODEL	COLLET SIZE	EXHAUST	FREE SPEED	ABRASIVE CAPACITY GRINDER	TYPE HOUSING	WEIGHT	LENGTH	AIR INLET SIZE
			R/MIN			LB	IN	IN
236GLF-180-C4	1/4 IN	FRONT	18000	1" (25MM) CARBIDE BURR, 2" (50MM) MOUNTED WHEEL	ALUMINUM	1.32	6.8	1/4
236GLR-200-C4	1/4 IN	REAR	20000	1" (25MM) CARBIDE BURR, 2" (50MM) MOUNTED WHEEL	ALUMINUM	1.32	7.4	1/4
236GLF-250-C6	3/8 IN	FRONT	25000	1" (25MM) CARBIDE BURR, 2" (50MM) MOUNTED WHEEL	ALUMINUM	1.32	6.8	1/4
236GLR-180-C4	1/4 IN	REAR	18000	1" CARBIDE BURR	ALUMINUM	1.32	7.4	1/4
236GLS-240-C4	1/4 IN	SIDE	24000	1" CARBIDE BURR	ALUMINUM	1.32	6.8	1/4
236GLR-250-C4	1/4 IN	REAR	25000	1" CARBIDE BURR	ALUMINUM	1.32	7.4	1/4
236GLF-250-C4	1/4 IN	FRONT	25000	1" CARBIDE BURR	ALUMINUM	1.32	6.8	1/4
236GLS-180-C4	1/4 IN	SIDE	18000	1" (25MM) CARBIDE BURR, 2" (50MM) MOUNTED WHEEL	ALUMINUM	1.32	6.8	1/4

All tools performance rated @ 90psi / 620 kPa air pressure.  
 Standard Equipment: Applicable collet, collet wrenches  
 Minimum Hose I.D.: 5/16in / 7.9mm

## 12-25 Series - Die Grinder - 200 & 300 Series Collet - Cleco Dotco

12,000 - 23,000 RPM 0.9 hp (0.67 kW)



- Ergonomic composite housing
- Optional over-hose available
- High power-to-weight ratio for optimal productivity

MODEL	COLLET SIZE	EXHAUST	FREE SPEED	ABRASIVE CAPACITY GRINDER	TYPE HOUSING	WEIGHT	LENGTH	AIR INLET SIZE
			R/MIN			LB	IN	IN
12L2542-01	1/4 IN	REAR	12000	1" CARBIDE BURR, 1.5" MOUNTED WHEEL	COMPOSITE	1.76	7.4	1/4
12L2562-01	1/4 IN	FRONT	12000	1" CARBIDE BURR, 1.5" MOUNTED WHEEL	COMPOSITE	1.76	7.4	1/4
12L2562-01M6	1/4 IN   6 MM	FRONT	12000	1" CARBIDE BURR, 1.5" MOUNTED WHEEL	COMPOSITE	1.76	7.4	1/4
12L2565-01	1/4 IN	FRONT	15000	1" CARBIDE BURR, 1.5" MOUNTED WHEEL	COMPOSITE	1.76	7.4	1/4
12L2502-01*	1/4 IN	FRONT	18000	1" CARBIDE BURR, 1.5" MOUNTED WHEEL	COMPOSITE	1.76	7.3	1/4
12L2568-01	1/4 IN	FRONT	18000	1" CARBIDE BURR, 1.5" MOUNTED WHEEL	COMPOSITE	1.76	7.4	1/4
12L2582-01*	1/4 IN	REAR	18000	1" CARBIDE BURR, 1.5" MOUNTED WHEEL	COMPOSITE	1.76	7.3	1/4
12L2500-01*	1/4 IN	FRONT	23000	1" CARBIDE BURR, 1.5" MOUNTED WHEEL	COMPOSITE	1.76	7.3	1/4

Governed Speed  
 \* All tools performance rated @ 90 psi / 620 kPa air pressure.  
 Standard Equipment: Applicable collet, collet wrenches  
 Minimum Hose I.D.: 5/16 in / 7.9 mm  
 Termination -01 = 200 Series collet  
 Termination -36 = 300 series collet

\*\* -36M6 includes both 1/4" Collet and 6 mm Collet. -36M6OH termination includes both 1/4" Collet and 6 mm Collet and overhose. -01M6 includes both 1/4" Collet and 6 mm Collet. -01M6OH termination includes both 1/4" Collet and 6 mm Collet and overhose.

MODEL	COLLET SIZE	EXHAUST	FREE SPEED	ABRASIVE CAPACITY GRINDER	TYPE HOUSING	WEIGHT	LENGTH	AIR INLET SIZE
			R/MIN			LB	IN	IN
12L2500-01M6**	1/4 IN   6 MM	FRONT	23000	1" CARBIDE BURR, 1.5" MOUNTED WHEEL	COMPOSITE	1.76	7.3	1/4
12L2500-36*	1/4 IN	FRONT	23000	1" CARBIDE BURR, 1.5" MOUNTED WHEEL	COMPOSITE	1.76	8.0	1/4
12L2580-01*	1/4 IN	REAR	23000	1" CARBIDE BURR, 1.5" MOUNTED WHEEL	COMPOSITE	1.76	7.3	1/4
12L2580-01M6OH**	1/4 IN   6 MM	REAR	23000	1" CARBIDE BURR, 1.5" MOUNTED WHEEL	COMPOSITE	1.76	7.3	1/4
12L2580-36*	1/4 IN	REAR	23000	1" CARBIDE BURR, 1.5" MOUNTED WHEEL	COMPOSITE	1.76	8.0	1/4
12L2582-01M6**	1/4 IN   6 MM	REAR	18000	1" CARBIDE BURR, 1.5" MOUNTED WHEEL	COMPOSITE	1.76	7.3	1/4

Governed Speed

\* All tools performance rated @ 90 psi / 620 kPa air pressure.

Standard Equipment: Applicable collet, collet wrenches

Minimum Hose I.D.: 5/16 in / 7.9 mm

Termination -01 = 200 Series collet

Termination -36 = 300 series collet

\*\* -36M6 includes both 1/4" Collet and 6 mm Collet. -36M6OH termination includes both 1/4" Collet and 6 mm Collet and overhose. -01M6 includes both 1/4" Collet and 6 mm Collet. -01M6OH termination includes both 1/4" Collet and 6 mm Collet and overhose.

## 10-25 Series - Die Grinder - 200 & 300 Series Collet - Cleco Dotco

12,000 - 23,000 RPM 0.9 hp (0.67 kW)



- Aluminum housing
- Compact, yet powerful motor

MODEL	COLLET SIZE	EXHAUST	FREE SPEED	ABRASIVE CAPACITY GRINDER	TYPE HOUSING	WEIGHT	LENGTH	AIR INLET SIZE
			R/MIN			LB	IN	IN
10L2562-01	1/4 IN	FRONT	12000	1" CARBIDE BURR, 1.5" MOUNTED WHEEL	ALUMINUM	1.98	7.0	1/4
10L2565-01	1/4 IN	FRONT	15000	1" CARBIDE BURR, 1.5" MOUNTED WHEEL	ALUMINUM	1.98	7.0	1/4
10L2502-01*	1/4 IN	FRONT	18000	1" CARBIDE BURR, 1.5" MOUNTED WHEEL	ALUMINUM	1.32	0.63	1/4
10L2568-01	1/4 IN	FRONT	18000	1" CARBIDE BURR, 1.5" MOUNTED WHEEL	ALUMINUM	1.54	7.3	1/4
10B2500-01*	1/4 IN	FRONT	23000	1" CARBIDE BURR, 1.5" MOUNTED WHEEL	ALUMINUM	1.32	0.63	1/4
10L2500-01*	1/4 IN	FRONT	23000	1" CARBIDE BURR, 1.5" MOUNTED WHEEL	ALUMINUM	1.32	0.63	1/4
10L2500-36*	1/4 IN	FRONT	23000	1" CARBIDE BURR, 1.5" MOUNTED WHEEL	ALUMINUM	1.32	7.1	1/4
10L2580-01*	1/4 IN	REAR	23000	1" CARBIDE BURR, 1.5" MOUNTED WHEEL	ALUMINUM	1.32	0.63	1/4
10L2580-36*	1/4 IN	REAR	23000	1" CARBIDE BURR, 1.5" MOUNTED WHEEL	ALUMINUM	1.54	7.9	1/4
10L2582-01*	1/4 IN	REAR	18000	1" CARBIDE BURR, 1.5" MOUNTED WHEEL	ALUMINUM	1.54	7.3	1/4

Governed; \* All tools performance rated @ 90 psi / 620 kPa air pressure.

Standard Equipment: Applicable collet, collet wrenches

Minimum Hose I.D.: 5/16 in / 7.9 mm

Termination -01 = 200 Series collet

Termination -36 = 300 series collet



## MP44 Series Die Grinder

20,000 RPM 0.3 hp (0.223 kW)

- Ideal for general purpose applications.
- Ergonomic grip for operator comfort
- 360° air inlet swivel



Grinders

MODEL	COLLET SIZE	EXHAUST	FREE SPEED	ABRASIVE CAPACITY GRINDER	TYPE HOUSING	WEIGHT	LENGTH	AIR INLET SIZE
			R/MIN			LB	IN	IN
MP4424	1/4 IN	REAR	20000	1/2" CARBIDE BURR, 1" MOUNTED WHEEL	COMPOSITE	1.32	6.4	1/4

General: Air Inlet 1/4" NPT. Use 1/4" (6.4 mm) I.D. hose. All tools performance rated @ 90psi (620 kPa) air pressure.

Optional: MP4424 & MP4430: 70619500 3/16" collet; 70610500 1/4" collet; 70610600 6 mm collet; MP4424: 543944 – 16oz. angle head grease.

## MP44 Series Die Grinder

23,000 RPM 0.3 hp (0.223 kW)

- Ideal for general purpose applications.
- Ergonomic grip for operator comfort
- 360° air inlet swivel



MODEL	COLLET SIZE	EXHAUST	FREE SPEED	ABRASIVE CAPACITY GRINDER	TYPE HOUSING	WEIGHT	LENGTH	AIR INLET SIZE
			R/MIN			LB	IN	IN
MP4430	1/4 IN	REAR	23000	1/2" CARBIDE BURR, 1" MOUNTED WHEEL	COMPOSITE	0.88	6.0	1/4

General: Air Inlet 1/4" NPT. Use 1/4" (6.4 mm) I.D. hose. All tools performance rated @ 90psi (620 kPa) air pressure.

Optional: MP4424 & MP4430: 70619500 3/16" collet; 70610500 1/4" collet; 70610600 6 mm collet; MP4424: 543944 – 16oz. angle head grease.

## MP44 Series Die Grinder

25,000 RPM 0.5 hp (0.373 kW)

- Ideal for general purpose applications.
- Ergonomic grip for operator comfort
- 360° air inlet swivel



MODEL	COLLET SIZE	EXHAUST	FREE SPEED	ABRASIVE CAPACITY GRINDER	TYPE HOUSING	WEIGHT	LENGTH	AIR INLET SIZE
			R/MIN			LB	IN	IN

MP4458	1/4 IN	FRONT	25000	1" CARBIDE BURR, 1.5" MOUNTED WHEEL	STEEL	1.32	6.1	1/4
--------	--------	-------	-------	-------------------------------------	-------	------	-----	-----

General: Air Inlet 1/4" NPT. Use 1/4" (6.4 mm) I.D. hose. All tools performance rated @ 90psi (620 kPa) air pressure.

Optional: MP4424 & MP4430: 70619500 3/16" collet; 70610500 1/4" collet; 70610600 6 mm collet; MP4424: 543944 – 16oz. angle head grease.

## 12-11 Series - Extended - Die Grinder - Cleco Dotco

25,000 - 28,000 RPM 0.3 hp (0.22 kW)

- 3" | 75mm and 5" | 125mm extended housings available
- Overhose available
- Multiple industrial bearings for low vibration and perfect balance



MODEL	COLLET SIZE	EXHAUST	FREE SPEED	EXTENSION	ABRASIVE CAPACITY GRINDER	TYPE HOUSING	WEIGHT	LENGTH	AIR INLET SIZE
			R/MIN	IN			LB	IN	IN

12L1111-36	1/4 IN	FRONT	25000	3	1/2" CARBIDE BURR, 1" MOUNTED WHEEL	COMPOSITE	1.10	8.9	1/4
12L1112-36	1/4 IN	FRONT	25000	5	1/2" CARBIDE BURR, 1" MOUNTED WHEEL	COMPOSITE	1.32	10.9	1/4
12L1100-36	1/4 IN	FRONT	28000	3	1/2" CARBIDE BURR, 1" MOUNTED WHEEL	COMPOSITE	1.10	8.9	1/4
12L1101-36	1/4 IN	FRONT	28000	5	1/2" CARBIDE BURR, 1" MOUNTED WHEEL	COMPOSITE	1.32	10.9	1/4
12L1180-36	1/4 IN	REAR	28000	3	1/2" CARBIDE BURR, 1" MOUNTED WHEEL	COMPOSITE	1.10	8.9	1/4
12L1181-36	1/4 IN	REAR	28000	5	1/2" CARBIDE BURR, 1" MOUNTED WHEEL	COMPOSITE	1.32	10.9	1/4

All tools performance rated @ 90 psi / 620 kPa air pressure.

Standard Equipment: Applicable collet, collet wrenches

Minimum Hose I.D.: 1/4 in / 4.8 mm

## 10-11 Series - Extended - Die Grinder - 300 Series Collet - Cleco Dotco

25,000 - 28,000 RPM 0.3 hp (0.22 kW)



- 3" | 75mm & 5" | 125mm extended housing for hard to reach areas
- Available in a variety of speeds
- Balanced and comfortable to minimize fatigue

MODEL	COLLET SIZE	EXHAUST	FREE SPEED	EXTENSION	ABRASIVE CAPACITY GRINDER	TYPE HOUSING	WEIGHT	LENGTH	AIR INLET SIZE
			R/MIN	IN			LB	IN	IN
10L1111-36	1/4 IN	FRONT	25000	3	1/2" CARBIDE BURR, 1" MOUNTED WHEEL	ALUMINUM	1.10	7.6	1/4
10L1112-36	1/4 IN	FRONT	25000	5	1/2" CARBIDE BURR, 1" MOUNTED WHEEL	ALUMINUM	1.10	9.8	1/4
10L1100-36	1/4 IN	FRONT	28000	3	1/2" CARBIDE BURR, 1" MOUNTED WHEEL	ALUMINUM	1.10	7.6	1/4
10L1101-36	1/4 IN	FRONT	28000	5	1/2" CARBIDE BURR, 1" MOUNTED WHEEL	ALUMINUM	1.10	9.8	1/4
10L1101-36M6*	1/4 IN   6 MM	FRONT	28000	5	1/2" CARBIDE BURR, 1" MOUNTED WHEEL	ALUMINUM	1.10	9.8	1/4
10L1180-36	1/4 IN	REAR	28000	3	1/2" CARBIDE BURR, 1" MOUNTED WHEEL	ALUMINUM	1.10	8.4	1/8
10L1181-36	1/4 IN	REAR	28000	5	1/2" CARBIDE BURR, 1" MOUNTED WHEEL	ALUMINUM	1.10	9.8	1/4

All tools performance rated @ 90 psi / 620 kPa air pressure.

Standard Equipment: Applicable collet, collet wrenches

Minimum Hose I.D.: 1/4 in / 6.4 mm

; \* -36M6 includes both 1/4" Collet and 6 mm Collet. -36M6OH termination includes both 1/4" Collet and 6 mm Collet and overhose

## 12-26 Series - Extended - Die Grinder - 5" (127mm) Extension - 200 Series Collet - Cleco Dotco

12,000 - 22,000 RPM 0.9 hp (0.67 kW)



- 5" | 125mm Extended housing for hard to reach areas
- Available in a variety of speeds
- Balanced and comfortable to minimize fatigue

MODEL	COLLET SIZE	EXHAUST	FREE SPEED	ABRASIVE CAPACITY GRINDER	TYPE HOUSING	WEIGHT	LENGTH	AIR INLET SIZE
			R/MIN			LB	IN	IN
12L2602-01	1/4 IN	SIDE	18000	1" CARBIDE BURR, 1.5" MOUNTED WHEEL	COMPOSITE	2.87	12.9	1/4
12L2668-01*	1/4 IN	SIDE	18000	1" CARBIDE BURR, 1.5" MOUNTED WHEEL	COMPOSITE	2.87	12.9	1/4
12L2600-01	1/4 IN	SIDE	22000	1" CARBIDE BURR, 1.5" MOUNTED WHEEL	COMPOSITE	2.87	12.9	1/4
12L2680-01	1/4 IN	REAR	22000	1" CARBIDE BURR, 1.5" MOUNTED WHEEL	COMPOSITE	2.87	12.9	1/4
12L2682-01	1/4 IN	REAR	12000	1" CARBIDE BURR, 1.5" MOUNTED WHEEL	COMPOSITE	2.87	12.9	1/4

All tools performance rated @ 90 psi / 620 kPa air pressure.

Standard Equipment: Applicable collet, collet wrenches

Minimum Hose I.D.: 5/16 in / 7.9 mm

\* Governed

## 12-26 Series - Die Grinder - Multiple Extension - 300 Series Collet - Cleco Dotco

18,000 RPM 0.9 hp (0.67 kW)



- Can be customized with multiple extensions for access to the most far-reaching areas
- Multiple industrial bearings provides optimal balance and power transfer
- Designed to work comfortably with the operator
- Available with 300 series 1/4" collet and 3/8"-24" external thread

MODEL	COLLET SIZE	EXHAUST	FREE SPEED	ABRASIVE CAPACITY GRINDER	TYPE HOUSING	WEIGHT	LENGTH	AIR INLET SIZE
			R/MIN			LB	IN	IN
12S2674-2C	3/8 IN-24E	REAR	18000	1.25" CONE OR PLUG WHEEL	COMPOSITE	4.19	23.5	1/4
12S2674-4C	3/8 IN-24E	REAR	18000	1.25" CONE OR PLUG WHEEL	COMPOSITE	6.6	38.0	1/4
12L2674-2A	1/4 IN	REAR	18000	3/4" CARBIDE BURR, 1-1/2" MOUNTED WHEEL	COMPOSITE	4.19	23.5	1/4
12L2674-3A	1/4 IN	REAR	18000	3/4" CARBIDE BURR, 1.5" MOUNTED WHEEL	COMPOSITE	5.3	30.8	1/4
12L2674-5A	1/4 IN	REAR	18000	3/4" CARBIDE BURR, 1.5" MOUNTED WHEEL	COMPOSITE	7.7	45.3	1/4
12S2674-2AM6*	1/4 IN   6 MM E300	REAR	18000	3/4" CARBIDE BURR, 1.5" MOUNTED WHEEL	COMPOSITE	4.19	23.5	1/4
12S2674-4A	1/4 IN	REAR	18000	3/4" CARBIDE BURR, 1.5" MOUNTED WHEEL	COMPOSITE	6.6	38.0	1/4
12S2674-5C	3/8 IN-24E	REAR	18000	1.25" CONE OR PLUG WHEEL	COMPOSITE	7.7	45.3	1/4

All tools performance rated @ 90 psi / 620 kPa air pressure.

Standard Equipment: Applicable collet, collet wrenches

Minimum Hose I.D.: 5/16 in / 7.9 mm

Termination:

A - 1/4" Collet

C - 3/8"-24 e

12L and 12S have the same throttle configuration

\* -2AM6 includes both 1/4" Collet and 6 mm e300 Collet.

## 236 Series - Extended - 200 Series Collet

18,000 - 24,000 RPM 0.9 hp (0.6 kW)



- Rugged all aluminum housing
- Heavy industrial use for shipyards, foundries, metal fabrication, rail yards, etc.
- 5" Extended housing for hard to reach areas
- Offers higher horsepower and torque levels than similar competitive tools

MODEL	COLLET SIZE	EXHAUST	FREE SPEED	ABRASIVE CAPACITY GRINDER	TYPE HOUSING	WEIGHT	LENGTH	AIR INLET SIZE
			R/MIN			LB	IN	IN
236GEL-240-C4	1/4 IN	SIDE	24000	1" CARBIDE BURR, 2" MOUNTED WHEEL	ALUMINUM	2.20	12.4	1/4
236GELR-180-C4	1/4 IN	REAR	18000	1" (25MM) CARBIDE BURR, 2" (50MM) MOUNTED WHEEL	ALUMINUM	2.20	12.3	1/4

All tools performance rated @ 90psi / 620 kPa air pressure.

Standard Equipment: Applicable collet, collet wrenches

Minimum Hose I.D.: 5/16in / 7.9mm



## 25 Series - Grinder - Extended - Governed - 200 Series Collet

18,000 RPM 1.4 hp (1.0 kW)



- Lightweight, Ergonomic housing
- Heavy industrial use for shipyards, foundries, metal fabrication, rail yards, etc.
- Extended housing for hard to reach areas
- Offers higher horsepower and torque levels than similar competitive tools

MODEL	COLLET SIZE	EXHAUST	FREE SPEED	ABRASIVE CAPACITY GRINDER	TYPE HOUSING	WEIGHT	LENGTH	AIR INLET SIZE
			R/MIN			LB	IN	IN
25GELC-120-C4	1/4 IN	REAR	12000	1.25" CARBIDE BURR, 2" MTD. WHEEL	ALUMINUM	3.09	14.5	3/8
25GELC-180-C4	1/4 IN	SIDE	18000	1.25" CARBIDE BURR, 2" MOUNTED WHEEL	ALUMINUM	3.09	14.5	3/8

All tools performance rated @ 90 psi / 620 kPa air pressure.  
Standard Equipment: Applicable collet, collet wrenches  
Minimum Hose I.D.: 3/8 in / 9.5 mm

## 12LF Series - Die Grinder - Right Angle - 300 Series Collet - Cleco Dotco

12,000 - 20,000 RPM 0.4 hp (0.29 kW)



- Composite housing
- Wide array of speeds; front and rear exhaust models available
- Ergonomic and balanced design minimized operator fatigue

MODEL	COLLET SIZE	EXHAUST	FREE SPEED	ABRASIVE CAPACITY GRINDER	ABRASIVE CAPACITY SANDER	TYPE HOUSING	WEIGHT	LENGTH	HEAD HEIGHT	AIR INLET SIZE
			R/MIN				LB	IN	IN	IN
12LF200-36	1/4 IN	FRONT	12000	1/2" CARBIDE BURR, 1" MOUNTED WHEEL	3" (75 MM) SANDING/ POLISHING DISC	COMPOSITE	1.10	6.6	2.70	1/4
12LF200-36M6*	1/4 IN   6 MM	FRONT	12000	1/2" CARBIDE BURR, 1" MOUNTED WHEEL	3" (75 MM) SANDING/ POLISHING DISC	COMPOSITE	1.10	6.6	2.70	1/4
12LF280-36	1/4 IN	REAR	12000	1/2" CARBIDE BURR, 1" MOUNTED WHEEL	3" (75 MM) SANDING/ POLISHING DISC	COMPOSITE	1.10	6.6	2.70	1/4
12LF280-36M6*	1/4 IN   6 MM	REAR	12000	1/2" CARBIDE BURR, 1" MOUNTED WHEEL	3" (75 MM) SANDING/ POLISHING DISC	COMPOSITE	1.10	6.6	2.70	1/4
12LF280-36M6OH*	1/4 IN   6 MM	REAR	12000	1/2" CARBIDE BURR, 1" MOUNTED WHEEL	3" (75 MM) SANDING/ POLISHING DISC	COMPOSITE	1.10	6.6	2.70	1/4
12LF201-36	1/4 IN	FRONT	20000	1/2" CARBIDE BURR, 1" MOUNTED WHEEL	2" (50 MM) SANDING/ POLISHING DISC	COMPOSITE	1.10	6.6	2.70	1/4
12LF201-36M6*	1/4 IN   6 MM	FRONT	20000	1/2" CARBIDE BURR, 1" MOUNTED WHEEL	2" (50 MM) SANDING/ POLISHING DISC	COMPOSITE	1.10	6.6	2.70	1/4
12LF281-36	1/4 IN	REAR	20000	1/2" CARBIDE BURR, 1" MOUNTED WHEEL	2" (50 MM) SANDING/ POLISHING DISC	COMPOSITE	1.10	6.6	2.70	1/4
12LF281-36M6*	1/4 IN   6 MM	REAR	20000	1/2" CARBIDE BURR, 1" MOUNTED WHEEL	2" (50 MM) SANDING/ POLISHING DISC	COMPOSITE	1.10	6.6	2.70	1/4
12LF281-36M6OH*	1/4 IN   6 MM	REAR	20000	1/2" CARBIDE BURR, 1" MOUNTED WHEEL	2" (50 MM) SANDING/ POLISHING DISC	COMPOSITE	1.10	6.6	2.70	1/4

All tools performance rated @ 90 psi / 620 kPa air pressure.

Standard Equipment: Applicable collet, collet wrenches

Minimum Hose I.D.: 1/4 in / 4.8 mm

\* -36M6 includes both 1/4" Collet and 6 mm Collet. -36M6OH termination includes both 1/4" Collet and 6 mm Collet and overhose

## 10LF Series - Die Grinder - Right Angle - 300 Series Collet - Cleco Dotco

12,000 - 20,000 RPM 0.4 hp (0.29 kW)



Grinders

- Composite housing
- Wide array of speeds; front and rear exhaust models available
- Ergonomic and balanced design minimized operator fatigue

MODEL	COLLET SIZE	EXHAUST	FREE SPEED	ABRASIVE CAPACITY GRINDER	ABRASIVE CAPACITY SANDER	TYPE HOUSING	WEIGHT	LENGTH	HEAD HEIGHT	AIR INLET SIZE
			R/MIN				LB	IN	IN	IN
10LF200-36	1/4 IN	FRONT	12000	1/2" CARBIDE BURR, 1" MOUNTED WHEEL	3" (75 MM) SANDING/POLISHING DISC	ALUMINUM	1.10	6.6	2.70	1/4
10LF200-36M6*	1/4 IN   6 MM	FRONT	12000	1/2" CARBIDE BURR, 1" MOUNTED WHEEL	3" (75 MM) SANDING/POLISHING DISC	ALUMINUM	1.10	6.6	2.70	1/4
10LF280-36	1/4 IN	REAR	12000	1/2" CARBIDE BURR, 1" MOUNTED WHEEL	3" (75 MM) SANDING/POLISHING DISC	ALUMINUM	1.10	6.6	2.70	1/4
10LF280-36M6*	1/4 IN   6 MM	REAR	12000	1/2" CARBIDE BURR, 1" MOUNTED WHEEL	3" (75 MM) SANDING/POLISHING DISC	ALUMINUM	1.10	6.6	2.70	1/4
10LF201-36	1/4 IN	FRONT	20000	1/2" CARBIDE BURR, 1" MOUNTED WHEEL	2" (50 MM) SANDING/POLISHING DISC	ALUMINUM	1.10	6.6	2.70	1/4
10LF201-36M6*	1/4 IN   6 MM	FRONT	20000	1/2" CARBIDE BURR, 1" MOUNTED WHEEL	2" (50 MM) SANDING/POLISHING DISC	ALUMINUM	1.10	6.6	2.70	1/4
10LF281-36	1/4 IN	REAR	20000	1/2" CARBIDE BURR, 1" MOUNTED WHEEL	2" (50 MM) SANDING/POLISHING DISC	ALUMINUM	1.10	6.6	2.70	1/4

All tools performance rated @ 90 psi / 620 kPa air pressure.

Standard Equipment: Applicable collet, collet wrenches

Minimum Hose I.D.: 1/4 in / 4.8 mm

\* -36M6 includes both 1/4" Collet and 6 mm Collet. -36M6OH termination includes both 1/4" Collet and 6 mm Collet and overhose



## 12-13 Series - Die Grinder - Right Angle - Gearless - 300 Series Collet - Cleco Dotco

20,000 - 30,000 RPM 0.3 hp (0.22 kW)



- Composite housing
- Wide array of speeds offered; front and rear exhaust models available
- Suitable for a wide range of finishing and deburring applications

MODEL	COLLET SIZE	EXHAUST	FREE SPEED	ABRASIVE CAPACITY GRINDER	ABRASIVE CAPACITY SANDER	TYPE HOUSING	WEIGHT	LENGTH	HEAD HEIGHT	AIR INLET SIZE
			R/MIN				LB	IN	IN	IN
12L1302-36	1/4 IN	FRONT	20000	1/2" CARBIDE BURR, 1" MOUNTED WHEEL	2" (50 MM) SANDING/POLISHING DISC	COMPOSITE	1.10	7.1	3.70	1/4
12L1301-36	1/4 IN	FRONT	25000	1/2" CARBIDE BURR, 1" MOUNTED WHEEL	2" (50 MM) SANDING/POLISHING DISC	COMPOSITE	1.10	7.1	3.70	1/4
12L1381-36	1/4 IN	REAR	25000	1/2" CARBIDE BURR, 1" MOUNTED WHEEL	2" (50 MM) SANDING/POLISHING DISC	COMPOSITE	1.10	7.1	3.70	1/4
12L1300-36	1/4 IN	FRONT	30000	1/2" CARBIDE BURR, 1" MOUNTED WHEEL	1" (25MM) SANDING/ POLISHING DISC	COMPOSITE	1.10	7.1	3.70	1/4
12L1380-36	1/4 IN	REAR	30000	1/2" CARBIDE BURR, 1" MOUNTED WHEEL	1" (25MM) SANDING/ POLISHING DISC	COMPOSITE	1.10	7.1	3.70	1/4
12L1382-36	1/4 IN	REAR	20000	1/2" CARBIDE BURR, 1" MOUNTED WHEEL	2" (50 MM) SANDING/POLISHING DISC	COMPOSITE	1.10	7.1	3.70	1/4

All tools performance rated @ 90 psi / 620 kPa air pressure.  
 Standard Equipment: Applicable collet, collet wrenches  
 Minimum Hose I.D.: 1/4 in / 4.8 mm

## 12-23 Series - Die Grinder - Right Angle - Gearless - 200 Series Collet - Cleco Dotco

20,000 RPM 0.5 hp (0.38 kW)

- Composite housing
- Suitable for a wide range of finishing and deburring applications
- 



MODEL	COLLET SIZE	EXHAUST	FREE SPEED	ABRASIVE CAPACITY GRINDER	TYPE HOUSING	WEIGHT	LENGTH	HEAD HEIGHT	AIR INLET SIZE
			R/MIN			LB	IN	IN	IN
12L2384-01	1/4 IN	FRONT	20000	3/4" CARBIDE BURR, 1.25" MOUNTED WHEEL	COMPOSITE	1.98	7.5	5.5	1/4

All tools performance rated @ 90 psi / 620 kPa air pressure.  
 Standard Equipment: Applicable collet, collet wrenches  
 Minimum Hose I.D.: 1/4 in / 4.8 mm

## 12-22 Series - 300 Series Collet

12,000 - 18,000 RPM 0.6 hp (0.45 kW)

- Ergonomic composite housing
- Heavy duty low profile head for greater accessibility
- High output motor in a lightweight package
- 3" | 75mm Extended head available



MODEL	COLLET SIZE	EXHAUST	FREE SPEED	ABRASIVE CAPACITY GRINDER	ABRASIVE CAPACITY SANDER	TYPE HOUSING	WEIGHT	LENGTH	HEAD HEIGHT	AIR INLET SIZE
			R/MIN				LB	IN	IN	IN
12L2278-36	1/4 IN	REAR	14500	1/2" CARBIDE BURR   1" MOUNTED WHEEL	4" (100MM) SANDING/POLISHING DISC	COMPOSITE	2.20	10.0	2.70	1/4
12L2218-36	1/4 IN	REAR	18000	1/2" CARBIDE BURR   1" MOUNTED WHEEL	3" (50MM) SANDING/POLISHING DISC	COMPOSITE	1.76	7.5	2.70	1/4
12L2277-36	1/4 IN	REAR	12000	1/2" CARBIDE BURR   1" MOUNTED WHEEL	4" (100MM) SANDING/POLISHING DISC	COMPOSITE	2.20	10.0	2.70	1/4

All tools performance rated @ 90 psi / 620 kPa air pressure.  
 Standard Equipment: Applicable collet, collet wrenches  
 Minimum Hose I.D.: 5/16 in / 7.9 mm

## 12-22 Series - Die Grinder - Right Angle - Heavy Duty Head - 200 Series Collet - Cleco Dotco

9,000 - 11,000 RPM 0.6 hp (0.45 kW)



- Composite housing
- Wide array of speeds; front, side, and rear exhaust models available
- Ergonomic and balanced design minimized operator fatigue

MODEL	COLLET SIZE	EXHAUST	FREE SPEED	ABRASIVE CAPACITY GRINDER	TYPE HOUSING	WEIGHT		LENGTH	HEAD HEIGHT	AIR INLET SIZE
			R/MIN			LB	IN			
12L2251-01	1/4 IN	SIDE	9000	3/4" CARBIDE BURR, 2" MOUNTED WHEEL	COMPOSITE	3.31	9.3	3.90	1/4	
12L2252-01	1/4 IN	SIDE	11000	3/4" CARBIDE BURR, 2" MOUNTED WHEEL	COMPOSITE	3.31	9.3	3.90	1/4	

All tools performance rated @ 90 psi / 620 kPa air pressure.  
Standard Equipment: Applicable collet, collet wrenches  
Minimum Hose I.D.: 5/16 in / 7.9 mm

## 216 Series - Grinder - Heavy Duty Head - 200 Series Collet

11,500 - 16,500 RPM 0.7 hp (0.4 kW)



- Rugged and durable aluminum housing
- Designed for heavy industries such as shipbuilding, foundries, metal fabrication, etc.
- Robust angle head design provides excellent durability

MODEL	COLLET SIZE	EXHAUST	FREE SPEED	ABRASIVE CAPACITY GRINDER	TYPE HOUSING	WEIGHT		LENGTH	HEAD HEIGHT	AIR INLET SIZE
			R/MIN			LB	IN			
216GLF-115A-C4	1/4 IN	FRONT	11500	1" CARBIDE BURR	ALUMINUM	2.43	7.1	2.20	1/4	
216GLFC-165A-C4	1/4 IN	REAR	16500	3/4" CARBIDE BURR	ALUMINUM	1.76	9.1	2.20	1/4	
216GLSC-165A-C4	1/4 IN	SIDE	16500	3/4" CARBIDE BURR	ALUMINUM	1.76	9.1	2.20	1/4	

All tools performance rated @ 90 psi / 620 kPa air pressure.  
Standard Equipment: Applicable collet, collet wrenches  
Minimum Hose I.D.: 1/4 in / 4.8 mm

## 236 Series - Heavy Duty Head - 200 Series Collet

11,500 - 16,500 RPM 0.8 hp (0.6 kW)



- Rugged and durable aluminum housing
- Designed for heavy industries such as shipbuilding, foundries, metal fabrication, etc.
- Robust angle head design provides excellent durability

MODEL	COLLET SIZE	EXHAUST	FREE SPEED	ABRASIVE CAPACITY GRINDER	TYPE HOUSING	WEIGHT	LENGTH	HEAD HEIGHT	AIR INLET SIZE
			R/MIN			LB	IN	IN	IN
236GLF-115A-C4	1/4 IN	FRONT	11500	1" (25MM) CARBIDE BURR, 2" (50MM) MOUNTED WHEEL	ALUMINUM	2.65	7.6	2.20	1/4
236GLR-115A-C4	1/4 IN	REAR	11500	1" (25MM) CARBIDE BURR, 2" (50MM) MOUNTED WHEEL	ALUMINUM	2.20	8.3	2.20	1/4
236GLFC-165A-C4	1/4 IN	FRONT	16500	3/4" CARBIDE BURR	ALUMINUM	1.98	9.6	2.20	1/4
236GLSC-115A-C4	1/4 IN	SIDE	11500	1" (25MM) CARBIDE BURR, 2" (50MM) MOUNTED WHEEL	ALUMINUM	1.98	9.6	2.20	1/4

All tools performance rated @ 90 psi / 620 kPa air pressure.  
Standard Equipment: Applicable collet, collet wrenches  
Minimum Hose I.D.: 5/16 in / 7.9 mm

## 12-27 Series - Die Grinder - Heavy Duty Head - 200 Series Collet - Cleco Dotco

6,000 - 11,000 RPM 0.9 hp (0.67 kW)



- Composite housing
- Front, side and rear exhaust models available
- Robust design perfectly suited for industrial applications

MODEL	COLLET SIZE	EXHAUST	FREE SPEED	ABRASIVE CAPACITY GRINDER	TYPE HOUSING	WEIGHT	LENGTH	HEAD HEIGHT	AIR INLET SIZE
			R/MIN			LB	IN	IN	IN
12L2750-01	1/4 IN	SIDE	6000	1" CARBIDE BURR, 1" MOUNTED WHEEL	COMPOSITE	3.31	9.8	3.90	1/4
12L2780-01	1/4 IN	REAR	6000	3/4" CARBIDE BURR, 2" MOUNTED WHEEL	COMPOSITE	3.31	9.8	3.90	1/4
12L2752-01	1/4 IN	SIDE	11000	3/4" CARBIDE BURR, 2" MOUNTED WHEEL	COMPOSITE	3.31	9.8	3.90	1/4
12L2782-01	1/4 IN	REAR	11000	3/4" CARBIDE BURR, 2" MOUNTED WHEEL	COMPOSITE	3.31	9.8	3.90	1/4

All tools performance rated @ 90 psi / 620 kPa air pressure.  
Standard Equipment: Applicable collet, collet wrenches  
Minimum Hose I.D.: 5/16 in / 7.9 mm



## 12-27 Series - Die Grinder - Right Angle - 300 Series Collet - Cleco Dotco

18,000 RPM 0.9 hp (0.67 kW)



- Composite housing
- Powerful motor with rear exhaust
- Robust design perfectly suited for industrial applications
- Standard 3" | 75mm extension

MODEL	COLLET SIZE	EXHAUST	FREE SPEED	ABRASIVE CAPACITY GRINDER	ABRASIVE CAPACITY SANDER	TYPE HOUSING	WEIGHT	LENGTH	HEAD HEIGHT	AIR INLET SIZE
			R/MIN				LB	IN	IN	IN
12L2777-36	1/4 IN	REAR	12000	3/4" CARBIDE BURR, 1.25" MOUNTED WHEEL	4" (100MM) SANDING/ POLISHING DISC	COMPOSITE	2.20	10.5	2.90	1/4
12L2776-36	1/4 IN	REAR	13500	3/4" CARBIDE BURR, 1.25" MOUNTED WHEEL	4" (100MM) SANDING/ POLISHING DISC	COMPOSITE	2.20	10.5	2.90	1/4
12L2718-36	1/4 IN	REAR	18000	3/4" CARBIDE BURR, 1.25" MOUNTED WHEEL	4" (100MM) SANDING/ POLISHING DISC	COMPOSITE	1.98	8.0	2.90	1/4
12L2778-36	1/4 IN	REAR	14500	3/4" CARBIDE BURR, 1.25" MOUNTED WHEEL	4" (100MM) SANDING/ POLISHING DISC	COMPOSITE	2.20	10.5	2.90	1/4

All tools performance rated @ 90 psi / 620 kPa air pressure.  
 Standard Equipment: Applicable collet, collet wrenches  
 Minimum Hose I.D.: 5/16 in / 7.9 mm

## 216 Series - Grinder - Heavy Duty Head - Right Angle - Depressed Center Wheel

11,500 RPM 0.6 hp (0.4 kW)



- Rugged and durable aluminum housing
- Robust and long lasting angle head for the most demanding applications
- Powerful motor stays durable in the harshest environments

MODEL	EXHAUST	FREE SPEED	ABRASIVE CAPACITY GRINDER	TYPE HOUSING	SPINDLE SIZE	WEIGHT	LENGTH	HEAD HEIGHT	AIR INLET SIZE
		R/MIN				LB	IN	IN	IN
216GLF-115A-D3T45	FRONT	11500	4.5" (115MM) TYPE 27	ALUMINUM	3/8" - 24 E	2.65	7.1	3.20	1/4
216GLF-115A-D3T4	FRONT	11500	4" (100MM) TYPE 27	ALUMINUM	3/8" - 24 E	2.65	7.1	3.20	1/4
216GLF-115A-W3T4	FRONT	11500	4" (100MM) TYPE 1	ALUMINUM	3/8" - 24 E	2.65	7.1	3.20	1/4

All tools performance rated @ 90 psi / 620 kPa air pressure.  
 Minimum Hose I.D.: 5/16 in / 7.9 mm  
 Standard Equipment: Wheel guard, wheel adapter, spindle wrench, Operating instructions & service manual

## 216 Series - Grinder - Extended Head - Right Angle - Depressed Center Wheel

13,500 RPM 0.6 hp (0.4 kW)

- Rugged and durable aluminum housing
- Extended head for better reach and accessibility
- Lock-off lever for safe operation



Grinders

MODEL	EXHAUST	FREE SPEED	ABRASIVE CAPACITY GRINDER	TYPE HOUSING	SPINDLE SIZE	WEIGHT	LENGTH	HEAD HEIGHT	AIR INLET SIZE
		R/MIN				LB	IN	IN	IN
216GLFB-135A-W3T4	FRONT	13500	4" (100MM) TYPE 1	ALUMINUM	3/8" - 24 E	2.20	9.6	2.20	1/4
216GLFB-135A-D3T4	FRONT	13500	4" (100MM) TYPE 27	ALUMINUM	3/8" - 24 E	2.65	9.1	2.20	1/4
216GLSB-135A-D3T4	SIDE	13500	4" (100MM) TYPE 27	ALUMINUM	3/8" - 24 E	2.43	9.1	2.20	1/4
216GLSB-135A-W3T4	SIDE	13500	4" (100MM) TYPE 1	ALUMINUM	3/8" - 24 E	2.43	9.1	2.20	1/4

All tools performance rated @ 90 psi / 620 kPa air pressure.  
Minimum Hose I.D.: 5/16 in / 7.9 mm  
Standard Equipment: Wheel guard, wheel adapter, spindle wrench, Operating instructions & service manual

## 12-27 Series - Die Grinder - Heavy Duty Head - Cleco Dotco

14,500 RPM 0.9 hp (0.67 kW)

- Ergonomic composite housing
- Durable and low profile angle head
- Low vibration and high output motor provides superior productivity



MODEL	EXHAUST	FREE SPEED	ABRASIVE CAPACITY GRINDER	TYPE HOUSING	SPINDLE SIZE	WEIGHT	LENGTH	AIR INLET SIZE
		R/MIN				LB	IN	IN
12L2714-28	REAR	14500	4" (100MM) TYPE 1	COMPOSITE	3/8"	3.31	8.0	1/4
12L2718-28	REAR	18000	4" (100MM) TYPE 1	COMPOSITE	3/8"	3.31	8.0	1/4

All tools performance rated @ 90 psi / 620 kPa air pressure.  
Minimum Hose I.D.: 1/2 in / 12.7 mm  
Standard Equipment: Wheel guard and flange wrench

## 25 Series - Grinder - Governed - Right Angle

6,000 - 8,500 RPM 1.4 hp (1.3 kW)



- Rugged and durable aluminum housing
- Powerful and robust motor with side exhaust
- Heavy duty angle head designed to outperform and outlast

MODEL	EXHAUST	FREE SPEED	ABRASIVE CAPACITY GRINDER	TYPE HOUSING	SPINDLE SIZE	WEIGHT		LENGTH	HEAD HEIGHT	AIR INLET SIZE
		R/MIN				LB	IN			
25GL-60A-W5T7	SIDE	6000	7" (180MM) TYPE 1	ALUMINUM	5/8" - 11 E	5.5	10.0	4.00	3/8	
25GL-60A-D5T7	SIDE	6000	7" (180MM) TYPE 27	ALUMINUM	5/8" - 11 E	5.5	10.0	4.00	3/8	
25GL-77A-D5T7	SIDE	7700	7" (180MM) TYPE 27	ALUMINUM	5/8" - 11 E	5.5	10.0	4.00	3/8	
25GL-85A-D5T7	SIDE	8500	7" (180MM) TYPE 27	ALUMINUM	5/8" - 11 E	5.5	10.0	4.00	3/8	

All tools performance rated @ 90 psi / 620 kPa air pressure.  
 Minimum Hose I.D.: 3/8 in / 9.5 mm  
 Standard Equipment: Wheel guard, flange wrench, Operating instructions & service manual

## 2260 Series - Right Angle Grinder

8,400 RPM 2.2 hp (1.6 kW)



- High performance 2.2HP motor, Governed at 8,000 rpm
- Available with 6", 7" guard options
- Reversible safety lever throttle
- Dual auxiliary handle positions
- Maximum material removal for a right angle grinder

MODEL	EXHAUST	FREE SPEED	ABRASIVE CAPACITY GRINDER	TYPE HOUSING	SPINDLE SIZE	WEIGHT		LENGTH	HEAD HEIGHT	AIR INLET SIZE
		R/MIN				LB	IN			
2260AGL-06	SIDE	8400	6" (150MM), TYPE 27/42	ALUMINUM	5/8" - 11 E	7.3	12.1	2.90	1/2	
2260AGL-07	SIDE	8400	7" (180MM), TYPE 27/42	ALUMINUM	5/8" - 11 E	7.3	12.1	2.90	1/2	

All tools performance rated @ 90 psi / 620 kPa air pressure.  
 Minimum Hose I.D.: 3/4 in / 19 mm  
 Standard Equipment: Wheel guard, adapters, spindle wrenches, operating instructions & service manuals

## 236 Series - Grinder - Right Angle - Heavy Duty Head

11,500 RPM 0.9 hp (0.6 kW)

- Rugged and durable aluminum housing
- Heavy duty and extended head models available
- Designed for heavy duty material removal applications



Grinders

MODEL	EXHAUST	FREE SPEED	ABRASIVE CAPACITY GRINDER	TYPE HOUSING	SPINDLE SIZE	WEIGHT	LENGTH	HEAD HEIGHT	AIR INLET SIZE
		R/MIN				LB	IN	IN	IN
236GLF-115A-W3T4	FRONT	11500	4" (100MM) TYPE 1	ALUMINUM	3/8" - 24 E	3.09	7.6	3.20	1/4
236GLR-115A-W3T4	REAR	11500	4" (100MM) TYPE 1	ALUMINUM	3/8" - 24 E	2.43	8.3	3.20	1/4
236GLS-115A-W3T4	SIDE	11500	4" (100MM) TYPE 1	ALUMINUM	3/8" - 24 E	2.43	8.3	3.20	1/4
236GLSB-115A-W3T4	SIDE	11500	4" (100MM) TYPE 1	ALUMINUM	3/8" - 24 E	1.98	9.6	3.20	1/4
236GLF-115A-D3T4	FRONT	11500	4" (100MM) TYPE 27	ALUMINUM	3/8" - 24 E	3.09	7.6	3.20	1/4
236GLR-115A-D3T4	REAR	11500	4" (100MM) TYPE 27	ALUMINUM	3/8" - 24 E	2.43	8.3	3.20	1/4
236GLFB-135A-D3T4	FRONT	13500	4" (100MM) TYPE 27	ALUMINUM	3/8" - 24 E	1.98	9.6	2.20	1/4
236GLRB-135A-D3T4	REAR	13500	4" (100MM) TYPE 27	ALUMINUM	3/8" - 24 E	1.98	7.6	2.20	1/4
236GLSB-135A-D3T4	SIDE	13500	4" (100MM) TYPE 27	ALUMINUM	3/8" - 24 E	1.98	9.6	2.20	1/4

All tools performance rated @ 90 psi / 620 kPa air pressure.  
 Minimum Hose I.D.: 1/2 in / 12.7 mm  
 Standard Equipment: Wheel guard and flange wrench

## Right Angle Grinder

12,000 - 13500 RPM 1.7 hp (1.25 kW)

- High-performance 1.7Hp motor delivers maximum power
- Quick change spindle lock for fast and easy abrasive changes
- Quieter operation with rear exhaust overhose standard
- Ergonomic, anti-vibration handle for increased comfort and less operator fatigue
- Dual-layer, high-impact composite housing for extreme durability
- Versatile 207° adjustable guard for easy access to tight spaces
- Available in 4", 4.5" and 5" disc sizes for all Type 27, Type 27 Threaded Hub and Type 1 Abrasive disc's



MODEL	FREE SPEED	EXHAUST	WHEEL SIZE	WEIGHT	HEAD HEIGHT	AIR INLET SIZE	AIR CONSUMPTION AT FREE SPEED	VIBRATION	AIR CONSUMPTION AT LOAD
	R/MIN		IN	LB	IN	IN	SCFM		M/S <sup>2</sup>
C3120A45-58OH	12000	REAR	4.5	3.98	3.03	3/8	35.7	7.3	30.9
C3120A45-M14OH	12000	REAR	4.5	3.98	3.03	3/8	35.7	7.3	30.9
C3120A5-58OH	12000	REAR	5	4.05	3.03	3/8	35.7	9.4	31.1
C3120A5-M14OH	12000	REAR	5	4.05	3.03	3/8	35.7	9.4	31.1
C3135A4-38OH	13500	REAR	4	3.78	3.03	3/8	49.5	4.8	32.4

## 236 Series - Grinder - Extended Head

13,500 RPM 0.8 hp (0.6kW)



- Rugged and durable aluminum housing
- Heavy duty and extended head models available
- Designed for heavy duty material removal applications

MODEL	EXHAUST	FREE SPEED	ABRASIVE CAPACITY GRINDER	TYPE HOUSING	SPINDLE SIZE	WEIGHT	LENGTH	AIR INLET SIZE
		R/MIN				LB	IN	IN
236GLFB-135A-W3T4	FRONT	13500	4" (100MM) TYPE 1	ALUMINUM	3/8" - 24 E	1.98	9.6	1/4
236GLRB-135A-W3T4	REAR	13500	4" (100MM) TYPE 1	ALUMINUM	3/8" - 24 E	1.98	7.6	1/4
236GLSB-135A-W3T4	SIDE	13500	4" (100MM) TYPE 1	ALUMINUM	3/8" - 24 E	1.98	9.6	1/4

All tools performance rated @ 90psi / 620 kPa air pressure.  
 Minimum Hose I.D.: 1/2in / 12.7mm  
 Standard Equipment: Wheel guard and flange wrench

## 236 Series - Cone/Plug Wheel - Inline

18,000 - 24,000 RPM 0.9 hp (0.7 kW)



- Rugged and durable aluminum housing
- Side and rear exhaust models available

MODEL	EXHAUST	ABRASIVE CAPACITY GRINDER	TYPE HOUSING	SPINDLE SIZE	WEIGHT	LENGTH	AIR INLET SIZE
					LB	IN	IN
236GELR-180-P3T	REAR	1.25" (31MM) CONE OR PLUG WHEEL	ALUMINUM	3/8" - 24 E	2.20	12.3	1/4
236GEL-240-P3T	SIDE	1.25" (31MM) CONE OR PLUG WHEEL	ALUMINUM	3/8" - 24 E	2.20	12.3	1/4

All tools performance rated @ 90psi / 620 kPa air pressure.  
 Standard Equipment: Applicable collet, collet wrenches  
 Minimum Hose I.D.: 5/16in / 7.9mm



## 25 Series - Grinder - Extended

14,000 - 18,000 RPM 1.4 hp (1.3 kW)

- Rugged and durable aluminum housing
- Governor speed control maintains RPM under load
- Safety- lock throttle lever prevents accidental start up



Grinders

MODEL	EXHAUST	FREE SPEED	ABRASIVE CAPACITY GRINDER	TYPE HOUSING	SPINDLE SIZE	WEIGHT	LENGTH	AIR INLET SIZE
		R/MIN				LB	IN	IN
25GELC-140-P3T	SIDE	14000	2" (50MM) CONE OR PLUG WHEEL	ALUMINUM	3/8" - 24 E	3.09	14.5	3/8
25GELC-180-P3T	SIDE	18000	2" (50MM) CONE OR PLUG WHEEL	ALUMINUM	3/8" - 24 E	3.09	14.5	3/8
25GELC-180-P5T	SIDE	18000	2" (50MM) CONE OR PLUG WHEEL	ALUMINUM	5/8" - 11 E	3.31	14.9	3/8

All tools performance rated @ 90 psi / 620 kPa air pressure.

Minimum Hose I.D.: 3/8 in / 9.5 mm

Standard Equipment: Wheel guard, flange wrench, Operating instructions & service manual

## 500B Horizontal Series - Governed - Rotatable Exhaust Deflector

9,000 - 12,000 RPM 2.1 hp (1.6 kW)

- Rugged and durable all-steel housing
- Air motor is governor- controlled to maintain RPM under heavy load
- High output motor designed to tackle the toughest material removal jobs



MODEL	EXHAUST	FREE SPEED	ABRASIVE CAPACITY GRINDER	TYPE HOUSING	SPINDLE SIZE	WEIGHT	LENGTH	AIR INLET SIZE
		R/MIN				LB	IN	IN
590BHL-P	SIDE	9000	3" CONE OR PLUG WHEEL	STEEL	5/8" - 11 E	7.5	17.9	1/2
5120BHL-P	SIDE	12000	3" CONE OR PLUG WHEEL	STEEL	5/8" - 11 E	7.5	17.9	1/2

All tools performance rated @ 90psi / 620 kPa air pressure.

Standard Equipment: Applicable wrenches, operating instructions & service manual

Minimum Hose I.D.: 5/16in / 7.9mm

## 236 Series - Grinder - Inline

18,000 RPM 0.9 hp (0.7 kW)

- Rugged and durable aluminum housing
- Side and rear exhaust models available



MODEL	EXHAUST	FREE SPEED	ABRASIVE CAPACITY GRINDER	TYPE HOUSING	SPINDLE SIZE	WEIGHT	LENGTH	AIR INLET SIZE
		R/MIN				LB	IN	IN
236GLR-180-W3T4	REAR	18000	4" (100MM) TYPE 1	ALUMINUM	3/8" - 24 E	1.76	7.3	1/4

## 25 Series - Grinder - Extended

12,000 - 18,000 RPM 1.4 hp (1.0 kW)



- Powerful motor for all cut-off operations
- Governed motor with side exhaust
- Rugged and durable for any environment

MODEL	EXHAUST	FREE SPEED	ABRASIVE CAPACITY GRINDER	TYPE HOUSING	SPINDLE SIZE	WEIGHT	LENGTH	AIR INLET SIZE
		R/MIN				LB	IN	IN
25GELC-120-W3T25	SIDE	12000	2.5" (63MM) TYPE 1	ALUMINUM	3/8" - 24 E	3.31	14.4	3/8
25GELC-120-W3T3	SIDE	12000	3" (75MM) TYPE 1	ALUMINUM	3/8" - 24 E	3.75	14.4	3/8
25GELC-140-W3T3	SIDE	14000	3" (75MM) TYPE 1	ALUMINUM	3/8" - 24 E	3.75	14.5	3/8
25GELC-180-W3T3	SIDE	18000	3" (75MM) TYPE 1	ALUMINUM	3/8" - 24 E	3.75	14.9	3/8
25GELC-120-W3T4	SIDE	12000	4" (100MM) TYPE 1	ALUMINUM	3/8" - 24 E	3.75	14.4	3/8
25GL-120-W3T4*	SIDE	12000	4" (100MM) TYPE 1	ALUMINUM	3/8" - 24 E	3.09	10.0	3/8

All tools performance rated @ 90 psi / 620 kPa air pressure.  
 Minimum Hose I.D.: 3/8 in / 9.5 mm  
 Standard Equipment: Wheel guard, flange wrench, Operating instructions & service manual  
 \* Non-extended version

## 500B Series - Horizontal Grinder - Rotatable Exhaust

6,000 RPM 1.9 hp (1.4 kW)



- Safety lever or spade handle available
- Suitable for the most demanding horizontal grinding applications
- Robust and efficient design trusted for decades

MODEL	EXHAUST	FREE SPEED	ABRASIVE CAPACITY GRINDER	TYPE HOUSING	SPINDLE SIZE	WEIGHT	LENGTH	AIR INLET SIZE
		R/MIN				LB	IN	IN
560BHL-16	SIDE	6000	6" X 1" (150MM X 25MM) TYPE 1	STEEL	5/8" - 11 E	10.8	18.4	1/2
560BHX-16	SIDE	6000	6" X 1" (150MM X 25MM) TYPE 1	STEEL	5/8" - 11 E	11.7	18.8	1/2

All tools performance rated @ 90 psi / 620 kPa air pressure.  
 Minimum Hose I.D.: 1/2 in / 12.7 mm  
 Standard Equipment: Wheel guard and flange wrench

## 1700 Series - Horizontal Grinder - Lock-Off Lever Throttle

6,000 RPM 3.1 hp (2.3 kW)



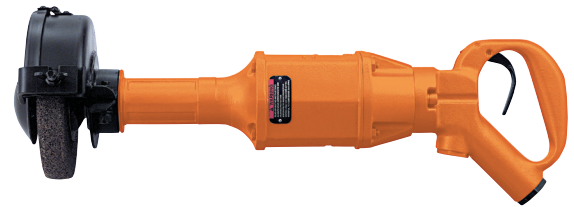
- Spade handle availability
- Safety- lock throttle lever prevents accidental start up
- High output motor designed to tackle the toughest material removal jobs

MODEL	EXHAUST	FREE SPEED	ABRASIVE CAPACITY GRINDER	TYPE HOUSING	SPINDLE SIZE	WEIGHT	LENGTH	AIR INLET SIZE
		R/MIN				LB	IN	IN
1760HL-16	SIDE	6000	6" X 1" (150MM X 25MM) TYPE 1	STEEL	5/8" - 11 E	14.6	19.6	1/2

All tools performance rated @ 90 psi / 620 kPa air pressure.  
Minimum Hose I.D.: 1/2 in / 12.7 mm  
Standard Equipment: Wheel guard and flange wrench

## 1900 Series - Horizontal Grinder

6,000 RPM 4.1 hp (3.1 kW)



- Governed air motor- controlled to maintain RPM under heavy load
- High output motor designed to tackle the toughest material removal jobs
- Safety- lock throttle lever prevents accidental start up

MODEL	EXHAUST	FREE SPEED	ABRASIVE CAPACITY GRINDER	TYPE HOUSING	SPINDLE SIZE	WEIGHT	LENGTH	AIR INLET SIZE
		R/MIN				LB	IN	IN
1960HG-16	SIDE	6000	6" X 1" (150MM X 25MM) TYPE 1	ALUMINUM	5/8" - 11 E	16.8	21.4	1/2
1960HL-16	REAR	6000	6" X 1" (150MM X 25MM) TYPE 1	ALUMINUM	5/8" - 11 E	16.8	21.4	1/2

All tools performance rated @ 90 psi / 620 kPa air pressure.  
Minimum Hose I.D.: 1/2 in / 12.7 mm  
Standard Equipment: Wheel guard and flange wrench

### 3060 Series - Vertical Grinder

6,000 RPM 3.0 hp (2.3 kW)

- Powerful, governed motor
- Ideally suited for the most rugged environments
- Maximum material removal in an ergonomic package



MODEL	EXHAUST	FREE SPEED	ABRASIVE CAPACITY GRINDER	TYPE HOUSING	SPINDLE SIZE	WEIGHT	AIR INLET SIZE
		R/MIN				LB	IN
3060AVL-06	SIDE	6000	6" (150MM) TYPE 11	ALUMINUM	5/8" - 11 E	10.1	1/2
3060AVL-07	SIDE	6000	7" (180MM) TYPE 27	ALUMINUM	5/8" - 11 E	9.7	1/2
3060AVL-09	SIDE	6000	9" (230MM) TYPE 27	ALUMINUM	5/8" - 11 E	10.4	1/2

All tools performance rated @ 90 psi / 620 kPa air pressure.  
 Minimum Hose I.D.: 3/4 in / 19 mm  
 Standard Equipment: Wheel guard, adapters, spindle wrenches, operating instructions & service manuals

### 4060 Series - Vertical Grinder

6,000 RPM 4.0 hp (3.1 kW)

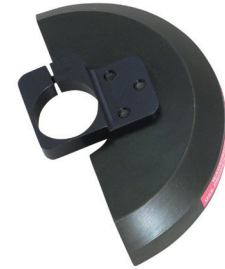
- Maximum material removal in any application
- Powerful motor delivering ultimate torque



MODEL	EXHAUST	FREE SPEED	ABRASIVE CAPACITY GRINDER	TYPE HOUSING	SPINDLE SIZE	WEIGHT	AIR INLET SIZE
		R/MIN				LB	IN
4060AVL-06	SIDE	6000	6" (150MM) TYPE 11	ALUMINUM	5/8" - 11 E	11.7	1/2
4060AVL-07	SIDE	6000	7" (180MM) TYPE 27	ALUMINUM	5/8" - 11 E	11.0	1/2
4060AVL-09	SIDE	6000	9" (230MM) TYPE 27	ALUMINUM	5/8" - 11 E	11.9	1/2

All tools performance rated @ 90 psi / 620 kPa air pressure.  
 Minimum Hose I.D.: 3/4 in / 19 mm  
 Standard Equipment: Wheel guard, adapters, spindle wrenches, operating instructions & service manuals

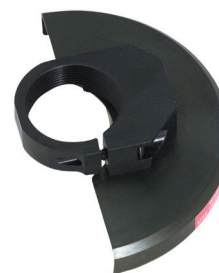
## Cleco Wheel Guards



PART NUMBER	WHEEL TYPE	TOOL SERIES	SIZE
202245	TYPE 1 WHEEL	236,25	4"   100MM
202278	TYPE 1 WHEEL	236, 25	3"   75MM
865786	TYPE 1 WHEEL	15H	3"   75MM
865988	TYPE 1 WHEEL	15H	4"   100MM
865993	TYPE 1 WHEEL	500BH	6"   150MM
881608	TYPE 1 WHEEL	500BH	4"   100MM
T50-1000430	TYPE 1 WHEEL, TYPE 27 WHEEL	C3 GRINDER	4"   100MM
T50-1000455	TYPE 1 WHEEL, TYPE 27 WHEEL	C3 GRINDER	4 1/2"   100MM
T50-1000467	TYPE 1 WHEEL, TYPE 27 WHEEL	C3 GRINDER	5"   125MM
202226	TYPE 27 WHEEL	216RA, 236RA	3"   75MM
202227	TYPE 27 WHEEL	216RA, 236RA	4"   100MM
203142	TYPE 27 WHEEL	216RA, 236RA	5"   125MM
203382	TYPE 27 WHEEL	236V	4"   100MM
207751PT	TYPE 27 WHEEL	3060AVL, 4060AVL	7"   180MM
207752PT	TYPE 27 WHEEL	3060AVL, 4060AVL	9"   230MM
208011PT	TYPE 27 WHEEL	2260AGL	6"   150MM
208012PT	TYPE 27 WHEEL	2260AGL	7"   180MM
889208	TYPE 27 WHEEL	216RA, 236RA	4"   100MM
849760	TYPE 28 WHEEL	25V	7"   180MM
865986	TYPE 28 WHEEL	25RA	7"   180MM
207750PT	TYPE 6 & 11 (CUP) WHEEL	3060AVL, 4060AVL	6"   150MM
861893	TYPE 6 & 11 (CUP) WHEEL		6"   150MM



## Cleco Dotco Wheel Guards



PART NUMBER	WHEEL TYPE	ABRASIVE CAPACITY GRINDER	TOOL SERIES
14-5002	STATIONARY CUP WHEEL GUARDS	6"	10-53, 10-58
14-1018	TYPE 1 (CUT-OFF) WHEEL GUARDS	3" X 3/16"	12-10
14-1258	TYPE 1 (CUT-OFF) WHEEL GUARDS	3" X 3/16"	12-22, 12-27 (LP)
14-1259	TYPE 1 (CUT-OFF) WHEEL GUARDS	4" X 3/16"	12-22, 12-27 (LP)
14-2623	TYPE 1 (CUT-OFF) WHEEL GUARDS	4" X 3/16"	12-25
14-2624	TYPE 1 (CUT-OFF) WHEEL GUARDS	3" X 3/16"	12-20, 12-25
14-2097	TYPE 1 WHEEL GUARDS	3" X 1/2"	12-26
14-2551	TYPE 1 WHEEL GUARDS	3" X 1/2"	12-25
14-3011	TYPE 1 WHEEL GUARDS	3" X 1"	12-41
14-4074	TYPE 1 WHEEL GUARDS	4" X 1"	12-41
14-5012	TYPE 1 WHEEL GUARDS	6" X 1"	12-51
14-5022	TYPE 1 WHEEL GUARDS	8" X 1"	10-56
14-2123	TYPE 27 DEPRESSED CENTER WHEEL GUARDS	7"	12-42
14-2152	TYPE 27 DEPRESSED CENTER WHEEL GUARDS	5"	12-22, 12-27
14-2252	TYPE 27 DEPRESSED CENTER WHEEL GUARDS	5"	12-27
14-2562	TYPE 27 DEPRESSED CENTER WHEEL GUARDS	4"	12-22, 12-27
14-2564	TYPE 27 DEPRESSED CENTER WHEEL GUARDS	3"	12-28 (NG)
14-2593	TYPE 27 DEPRESSED CENTER WHEEL GUARDS	3"	12-22, 12-27 (LP)
14-2594	TYPE 27 DEPRESSED CENTER WHEEL GUARDS	4"	12-22, 12-27 (LP)
14-2672	TYPE 27 DEPRESSED CENTER WHEEL GUARDS	4.5"	12-27
14-5017	TYPE 27 DEPRESSED CENTER WHEEL GUARDS	9"	10-53, 10-58
14-5018	TYPE 28 DEPRESSED CENTER WHEEL GUARDS	7"	10-53, 10-58
14-5019	TYPE 28 DEPRESSED CENTER WHEEL GUARDS	9"	10-53, 10-58

## Series HG Collets

- For use with Pencil Grinders

PART NUMBER	COLLET SIZE	TOOL TERMINATION	CAPACITY MAXIMUM	TOOL SERIES
01-0100	1/8 IN	-18	1/8 IN	12-03
01-0102	3/32 IN	-16	3/32 IN	12-03
01-0148	3 MM	-13	3 MM	12-03
100	1/8 IN	-08 OR -18	1/8 IN	10-04, 10-90, 12-04
102	3/32 IN	-06 OR -16	3/32 IN	10-04, 10-90
103	1/16 IN	-04 OR -14	1/16 IN	10-04, 10-90
131	2.35 MM	-02 OR -12	2.35 IN	10-04, 10-90
146	1 MM	-00 OR -10	1 MM	10-04, 10-90
148	3 MM	-03 OR -13	3 MM	10-04, 10-90, 12-04

## Universal Collets

- For use with 12-05, 12-22, 12-27 grinders



MODEL	COLLET SIZE	TOOL TERMINATION	TOOL SERIES
	IN		
7808	1/4 IN	-45	12-05, 12-22, 12-27
7809	1/8 IN	-4508	12-05, 12-22, 12-27
7811	6 MM	-45M6	12-05, 12-22, 12-27
7812	3/16 IN	-4512	12-05, 12-22, 12-27
LBD3300	3 MM	-45M3	12-05, 12-22, 12-27

## Termination 01 - Series 200 Collets

- Series 200 Collet



MODEL	COLLET SIZE		TOOL TERMINATION	TOOL SERIES
	IN			
204	1/8 IN		-0108	12-20, 12-25, 12-21, 12-22, 12-26, 12-27, 12-31
205	5/32 IN		-0110	12-20, 12-25, 12-21, 12-22, 12-26, 12-27, 12-31
206	3/16 IN		-0112	12-20, 12-25, 12-21, 12-22, 12-26, 12-27, 12-31
207	7/32 IN		-0114	12-20, 12-25, 12-21, 12-22, 12-26, 12-27, 12-31
208	1/4 IN		-01	12-20, 12-25, 12-21, 12-22, 12-26, 12-27, 12-31
209	9/32 IN		-0118	12-20, 12-25, 12-21, 12-22, 12-26, 12-27, 12-31
210	5/16 IN		-0120	12-20, 12-25, 12-21, 12-22, 12-26, 12-27, 12-31
212	3/8 IN		-0124	12-20, 12-25, 12-21, 12-22, 12-26, 12-27, 12-31
213	6 MM		-01M6	12-20, 12-25, 12-21, 12-22, 12-26, 12-27, 12-31
216	6 MM		-01M8	12-20, 12-25, 12-21, 12-22, 12-26, 12-27, 12-31

## Series 300 Collets

- 300 Series Collets



MODEL	COLLET SIZE		TOOL TERMINATION	TOOL SERIES
	IN			
304	1/8 IN		-3608	10-95, 12-10, 12-11, 12-12, 12-20, 12-25, 12-05, 12-22, 12-27
306	3/16 IN		-3612	12-10, 12-11, 12-12, 12-20, 12-25, 12-05, 12-22, 12-27
308	1/4 IN		-36	10-95, 12-10, 12-11, 12-12, 12-20, 12-25, 12-05, 12-22, 12-27
XJG38	3/64 IN		-3603	12-10, 12-11, 12-12, 12-20, 12-25, 12-05, 12-22, 12-27
XJG44	5/64 IN		-3605	12-10, 12-11, 12-12, 12-20, 12-25, 12-05, 12-22, 12-27
XJG54	5/32 IN		-3610	12-10, 12-11, 12-12, 12-20, 12-25, 12-05, 12-22, 12-27
XJG68	6 MM		-36M6	12-10, 12-11, 12-12, 12-20, 12-25, 12-05, 12-22, 12-27

## Termination 36 - Series 300 Collets

- Series 300 Collet



MODEL	COLLET SIZE		TOOL TERMINATION	TOOL SERIES
	IN			
301	3/64 IN		-3603	12-10, 12-11, 12-12, 12-20, 12-25
302	5/64 IN		-3605	12-10, 12-11, 12-12, 12-20, 12-25
303	3/32 IN		-3606	12-10, 12-11, 12-12, 12-20, 12-25
304	1/8 IN		-3608	10-95, 12-10, 12-11, 12-12, 12-20, 12-25
305	5/32 IN		-3610	12-10, 12-11, 12-12, 12-20, 12-25
306	3/16 IN		-3612	12-10, 12-11, 12-12, 12-20, 12-25
307	7/32 IN		-3612	12-10, 12-11, 12-12, 12-20, 12-25
308	1/4 IN		-36	10-95, 12-10, 12-11, 12-12, 12-20, 12-25
310	6 MM		-36M3	12-10, 12-11, 12-12, 12-20, 12-25
311	3 MM		-36M6	12-10, 12-11, 12-12, 12-20, 12-25, 12-05, 12-22, 12-27

## Termination 62 - Series K Collets

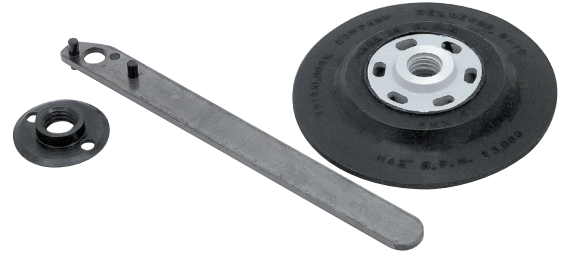
- Series K Collet



MODEL	COLLET SIZE		TOOL TERMINATION	TOOL SERIES
	IN			
120	1/8 IN		-6208	10-43, 11-43
121	3/16 IN		-6212	10-43, 11-43
122	1/4 IN		-6216	10-43, 11-43
123	5/16 IN		-6220	10-43, 11-43
124	3/8 IN		-62	10-43, 11-43
125	7/16 IN		-6228	10-43, 11-43
126	1/2 IN		-6232	10-43, 11-43
127	9/16 IN		-6270	10-43, 11-43
134	8 MM		-62M8	10-43, 11-43
135	10 MM		-6270	10-43, 11-43

## Spiral Cool Sanding Kits

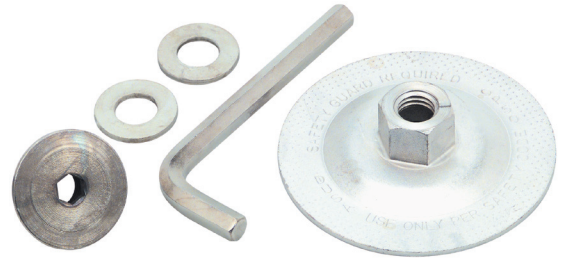
Sanding backing Pads for Grinders



MODEL	DESCRIPTION	TOOL SERIES	SIZE
861655	GRINDER ACCESSORIES	25RA, 15V, 1200V, 2260AGL	7"
861792	GRINDER ACCESSORIES	216RA, 236RA, C3	5"

## Type 27 & 28 Wheel Adapter Kit

Used for with Type 27 & Type 28 Wheels



MODEL	DESCRIPTION	TOOL SERIES
849269	GRINDER ACCESSORIES	15V, 1200V, 1700V, 1900V, 3060V, 4060V

## Long Collet Guard

For us with 12-10 grinders

- Completely covers the collet
- For us with 12-10 grinders
- Limits the diameter of the cutting tool used to 5/8"



MODEL	DESCRIPTION
1020PT	LONG COLLET GUARD



## Noise Suppressor Guard

For use with 12-10 front exhaust tools only

- Completely covers the collet
- For use with 12-10 front exhaust tools only
- Limits the diameter of the cutting tool used to 1/2"
- Air is exhausted at an angle



MODEL	DESCRIPTION	TOOL SERIES
14-2188	COLLET GUARD	12-10 FRONT EXHAUST

## Turbine Collet Guard

For use with 10R9000 grinders

- Slips on and off tools with a slight twist



MODEL	DESCRIPTION	TOOL SERIES
14-1280	GRINDER ACCESSORIES	10-9000

## Overhose for 236 Grinders

- 



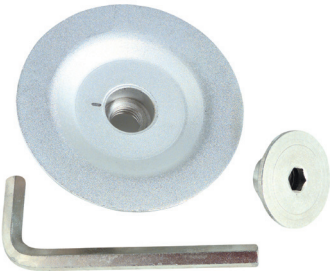
MODEL	DESCRIPTION
202343	HOSE CLAMP
869204	OVERHOSE ADAPTER
869580	EXHAUST OVERHOSE

Rear exhaust models only

### Depressed Center Wheel Adapter

Adaptor Kit for 7" and 9" Depressed Center Wheels

- Adapt a 7/8" arbor abrasive to a 5/8"-11 threaded spindle



MODEL	DESCRIPTION
14-5008	ADAPTER AND WASHER

## 12LF Series - Sander - Right Angle - 300 Series Collet - Cleco Dotco

12,000 - 20,000 RPM 0.4 hp (0.29 kW)

- Composite housing
- Wide array of speeds; front and rear exhaust models available
- Ergonomic and balanced design minimized operator fatigue
- Tool not supplied with backing pad as shown



MODEL	COLLET SIZE	EXHAUST	FREE SPEED	ABRASIVE CAPACITY GRINDER	ABRASIVE CAPACITY SANDER	TYPE HOUSING	WEIGHT	LENGTH	HEAD HEIGHT	AIR INLET SIZE
			R/MIN				LB	IN	IN	IN
12LF200-32	1/4 IN-28I	FRONT	12000		3" (75 MM) SANDING/ POLISHING DISC	COMPOSITE	1.10	6.6	2.70	1/4
12LF201-32	1/4 IN-28I	FRONT	20000		2" (50 MM) SANDING/ POLISHING DISC	COMPOSITE	1.10	6.6	2.70	1/4
12LF280-36*	1/4 IN	REAR	12000	1/2" CARBIDE BURR, 1" MOUNTED WHEEL	3" (75 MM) SANDING/ POLISHING DISC	COMPOSITE	1.10	6.6	2.70	1/4
12LF281-36*	1/4 IN	REAR	20000	1/2" CARBIDE BURR, 1" MOUNTED WHEEL	2" (50 MM) SANDING/ POLISHING DISC	COMPOSITE	1.10	6.6	2.70	1/4
12LF201-36*	1/4 IN	FRONT	20000	1/2" CARBIDE BURR, 1" MOUNTED WHEEL	2" (50 MM) SANDING/ POLISHING DISC	COMPOSITE	1.10	6.6	2.70	1/4
12LF200-36*	1/4 IN	FRONT	12000	1/2" CARBIDE BURR, 1" MOUNTED WHEEL	3" (75 MM) SANDING/ POLISHING DISC	COMPOSITE	1.10	6.6	2.70	1/4

All tools performance rated @ 90psi / 620 kPa air pressure.

Standard Equipment: Applicable collet, collet wrenches

Minimum Hose I.D.: 1/4in / 4.8mm; \* All tools performance rated @ 90 psi / 620 kPa air pressure.

Standard Equipment: Applicable collet, collet wrenches

Minimum Hose I.D.: 1/4 in / 4.8 mm

## 10LF Series - Sander - Right Angle - 300 Series Collet - Cleco Dotco

12,000 - 20,000 RPM 0.4 hp (0.29 kW)



- Aluminum housing for high durability
- Wide array of speeds; front and rear exhaust models available
- Ergonomic and balanced design minimized operator fatigue
- Tool not supplied with backing pad as shown

MODEL	COLLET SIZE	EXHAUST	FREE SPEED	ABRASIVE CAPACITY GRINDER	ABRASIVE CAPACITY SANDER	TYPE HOUSING	WEIGHT	LENGTH	HEAD HEIGHT	AIR INLET SIZE
			R/MIN				LB	IN	IN	IN
10LF200-32	1/4 IN-28I	FRONT	12000		3" (75 MM) SANDING/POLISHING DISC	ALUMINUM	1.10	6.6	2.90	1/4
10LF200-36	1/4 IN	FRONT	12000	1/2" CARBIDE BURR, 1" MOUNTED WHEEL	3" (75 MM) SANDING/POLISHING DISC	ALUMINUM	1.10	6.6	2.70	1/4
10LF280-36	1/4 IN	REAR	12000	1/2" CARBIDE BURR, 1" MOUNTED WHEEL	3" (75 MM) SANDING/POLISHING DISC	ALUMINUM	1.10	6.6	2.70	1/4
10LF281-36	1/4 IN	REAR	20000	1/2" CARBIDE BURR, 1" MOUNTED WHEEL	2" (50 MM) SANDING/POLISHING DISC	ALUMINUM	1.10	6.6	2.70	1/4
10LF201-36	1/4 IN	FRONT	20000	1/2" CARBIDE BURR, 1" MOUNTED WHEEL	2" (50 MM) SANDING/POLISHING DISC	ALUMINUM	1.10	6.6	2.70	1/4
10LF201-32	1/4 IN-28I	FRONT	20000		2" (50 MM) SANDING/POLISHING DISC	ALUMINUM	1.10	6.6	2.90	1/4

All tools performance rated @ 90 psi / 620 kPa air pressure.  
 Standard Equipment: Applicable collet, collet wrenches  
 Minimum Hose I.D.: 1/4 in / 4.8 mm

## 12-13 Series - Sander - Right Angle - Gearless - 300 Series Collet - Cleco Dotco

20,000 - 30,000 RPM 0.3 hp (0.22 kW)



- Composite housing
- Wide array of speeds offered; front and rear exhaust models available
- Suitable for a wide range of finishing and deburring applications
- Tool not supplied with backing pad as shown

MODEL	COLLET SIZE	EXHAUST	FREE SPEED	ABRASIVE CAPACITY GRINDER	ABRASIVE CAPACITY SANDER	TYPE HOUSING	WEIGHT	LENGTH	HEAD HEIGHT	AIR INLET SIZE
			R/MIN				LB	IN	IN	IN
12L1301-32	1/4 IN-28I	FRONT	25000		2" (50 MM) SANDING/POLISHING DISC	COMPOSITE	1.10	7.1	3.70	1/4
12L1300-32	1/4 IN-28I	FRONT	30000		1" (25MM) SANDING/ POLISHING DISC	COMPOSITE	1.10	7.1	3.70	1/4
12L1382-36	1/4 IN	REAR	20000	1/2" CARBIDE BURR, 1" MOUNTED WHEEL	2" (50 MM) SANDING/POLISHING DISC	COMPOSITE	1.10	7.1	3.70	1/4
12L1302-36	1/4 IN	FRONT	20000	1/2" CARBIDE BURR, 1" MOUNTED WHEEL	2" (50 MM) SANDING/POLISHING DISC	COMPOSITE	1.10	7.1	3.70	1/4
12L1381-36	1/4 IN	REAR	25000	1/2" CARBIDE BURR, 1" MOUNTED WHEEL	2" (50 MM) SANDING/POLISHING DISC	COMPOSITE	1.10	7.1	3.70	1/4
12L1300-36	1/4 IN	FRONT	30000	1/2" CARBIDE BURR, 1" MOUNTED WHEEL	1" (25MM) SANDING/ POLISHING DISC	COMPOSITE	1.10	7.1	3.70	1/4
12L1380-36	1/4 IN	REAR	30000	1/2" CARBIDE BURR, 1" MOUNTED WHEEL	1" (25MM) SANDING/ POLISHING DISC	COMPOSITE	1.10	7.1	3.70	1/4
12L1301-36	1/4 IN	FRONT	25000	1/2" CARBIDE BURR, 1" MOUNTED WHEEL	2" (50 MM) SANDING/POLISHING DISC	COMPOSITE	1.10	7.1	3.70	1/4

All tools performance rated @ 90 psi / 620 kPa air pressure.

Standard Equipment: Applicable collet, collet wrenches

Minimum Hose I.D.: 1/4 in / 4.8 mm

## 12-22 Series - Right Angle - Grinder/Sander - 300 Series Collet - Cleco Dotco

18,000 RPM 0.6 hp (0.45 kW)



- Ergonomic composite housing
- Heavy duty low profile head for greater accessibility
- High output motor in a lightweight package
- 3" | 75mm Extended head available

MODEL	COLLET SIZE	EXHAUST	FREE SPEED	ABRASIVE CAPACITY GRINDER	ABRASIVE CAPACITY SANDER	TYPE HOUSING	WEIGHT	LENGTH	HEAD HEIGHT	AIR INLET SIZE
			R/MIN				LB	IN	IN	IN
12L2277-36	1/4 IN	REAR	12000	1/2" CARBIDE BURR   1" MOUNTED WHEEL	4" (100MM) SANDING/POLISHING DISC	COMPOSITE	2.20	10.0	2.70	1/4
12L2218-36	1/4 IN	REAR	18000	1/2" CARBIDE BURR   1" MOUNTED WHEEL	3" (50MM) SANDING/POLISHING DISC	COMPOSITE	1.76	7.5	2.70	1/4
12L2278-36	1/4 IN	REAR	14500	1/2" CARBIDE BURR   1" MOUNTED WHEEL	4" (100MM) SANDING/POLISHING DISC	COMPOSITE	2.20	10.0	2.70	1/4

All tools performance rated @ 90 psi / 620 kPa air pressure.  
Standard Equipment: Applicable collet, collet wrenches  
Minimum Hose I.D.: 5/16 in / 7.9 mm

## 12-22 Series - Right Angle - Grinder/Sander - Heavy Duty Head

9,000 RPM 0.6 hp (0.45 kW)



- Ergonomic composite housing
- Heavy duty low profile head for greater accessibility
- high output motor in a lightweight package
- Tool not supplied with backing pad as shown

MODEL	EXHAUST	FREE SPEED	ABRASIVE CAPACITY SANDER	TYPE HOUSING	WEIGHT	LENGTH	HEAD HEIGHT	AIR INLET SIZE
		R/MIN			LB	IN	IN	IN
12L2251-80	FRONT	9000	5" (125MM) SANDING/POLISHING DISC	COMPOSITE	3.31	9.3	3.90	1/4

All tools performance rated @ 90psi / 620 kPa air pressure.  
Minimum Hose I.D.: 5/16in / 7.9mm  
Standard Equipment: Applicable collet, collet wrenches



## 10-27 & 12-27 Series - Heavy Duty Head - Sander/Grinder - 5/8"-11 Threaded Spindle

3,300 - 11,000 RPM 0.9 hp (0.67 kW)



- Aluminum and Composite housing available
- high output motor for demanding sanding applications
- heavy duty low profile head for superior durability
- Tool not supplied with backing pad as shown

MODEL	EXHAUST	TERMINATION	FREE SPEED	ABRASIVE CAPACITY SANDER	TYPE HOUSING	WEIGHT	LENGTH	HEAD HEIGHT	AIR INLET SIZE	TABLE SORT ORDER
			R/MIN			LB	IN	IN	IN	
10L2752-80	FRONT	5/8" - 11 E	11000	4" (100MM) SANDING/ POLISHING DISCS	ALUMINUM	3.31	8.6	3.90	1/4	10
12L2752-80	FRONT	5/8" - 11 E	11000	4" (102 MM) SANDING/POLISHING DISC	COMPOSITE	3.31	9.8	3.90	1/4	9
10L2760-80	FRONT	5/8" - 11 E	3300	4" (102 MM) WIRE BRUSH, 6" (152 MM) BUFFING WHEEL	ALUMINUM	3.97	9.3	3.90	1/4	1
12L2760-80	FRONT	5/8" - 11 E	3300	7" (178 MM) SANDING/POLISHING DISC	COMPOSITE	3.97	10.5	3.90	1/4	2
10L2750-80	FRONT	5/8" - 11 E	6000	7" (178 MM) SANDING/POLISHING DISC	ALUMINUM	3.09	8.5	3.90	1/4	4
12L2750-80	FRONT	5/8" - 11 E	6000	7" (178 MM) SANDING/POLISHING DISC	COMPOSITE	3.31	9.8	3.90	1/4	5
12L2761-80	FRONT	5/8" - 11 E	6000	7" (178 MM) SANDING/POLISHING DISC	COMPOSITE	3.97	10.5	3.90	1/4	6
10L2751-80	FRONT	5/8" - 11 E	9000	5" (127 MM) SANDING/POLISHING DISC	ALUMINUM	3.09	8.5	3.90	1/4	7
12L2751-80	FRONT	5/8" - 11 E	9000	5" (127 MM) SANDING/POLISHING DISC	COMPOSITE	3.31	9.8	3.90	1/4	8
12L2762-80	FRONT	5/8" - 11 E	4500	7" (178 MM) SANDING/POLISHING DISC	COMPOSITE	3.97	10.5	3.90	1/4	3

All tools performance rated @ 90 psi / 620 kPa air pressure.  
 Minimum Hose I.D.: 5/16 in / 7.9 mm  
 Standard Equipment: Applicable collet, collet wrenches

### Right Angle Sander

- High-performance 1.7Hp motor delivers maximum power
- Quick change spindle lock for fast and easy abrasive changes
- Quieter operation with rear exhaust overhose standard
- Ergonomic, anti-vibration handle for increased comfort and less operator fatigue
- Dual-layer, high-impact composite housing for extreme durability



MODEL	EXHAUST	FREE SPEED	SPINDLE SIZE	WEIGHT	LENGTH	HEAD HEIGHT	AIR INLET SIZE
		R/MIN		LB	IN	IN	IN
C3120ASDR-58OH	REAR	12000	5/8" - 11	4.05	8.95	3.03	3/8

## 12-12 Series - Belt Sander - Cleco Dotco

12,000 - 20,000 RPM 0.3 hp (0.22 kW)



- Grind, debur, strap polish, blend
- Choice of geared or gearless
- Ergonomic housing reduces cold air transmission to operator

MODEL	EXHAUST	FREE SPEED	ABRASIVE CAPACITY GRINDER	TYPE HOUSING	WEIGHT	LENGTH	AIR INLET SIZE
		R/MIN			LB	IN	IN
12L1280-36B2	REAR	12000	1/2" W X 12" L SANDING BELT	COMPOSITE	1.32	11.3	1/4
12L1281-36B2	REAR	20000	1/2" W X 12" L SANDING BELT	COMPOSITE	1.32	11.3	1/4

All tools performance rated @ 90psi / 620 kPa air pressure.

Minimum Hose I.D.: 1/4in / 4.8mm

Standard Equipment: No.80 and No.120 grit sanding belt or one medium grit non-woven belt, applicable wrenches, grease gun, gear lube

## 12LF Series - Belt Sander - Cleco Dotco

12,000 - 20,000 RPM 0.3 hp (0.22 kW)



- Grind, debur, strap polish, blend
- Choice of geared or gearless
- Ergonomic housing reduces cold air transmission to operator

MODEL	EXHAUST	FREE SPEED	ABRASIVE CAPACITY GRINDER	TYPE HOUSING	WEIGHT	LENGTH	AIR INLET SIZE
		R/MIN			LB	IN	IN
12LF280-36B2	REAR	12000	1/2"W X 12"L SANDING BELT	COMPOSITE	1.32	11.3	1/4
12LF281-36B2	REAR	20000	1/2"W X 12"L SANDING BELT	COMPOSITE	1.32	11.3	1/4

All tools performance rated @ 90psi / 620 kPa air pressure.

Minimum Hose I.D.: 1/4in / 4.8mm

Standard Equipment: No.80 and No.120 grit sanding belt or one medium grit non-woven belt, applicable wrenches, grease gun, gear lube

## 12-23 Series - Gearless - Woven or Non-Woven Sanding Belt - Cleco Dotco

20,000 RPM 0.5 hp (0.38 kW)



- Grind, debur, strap polish, blend
- Choice of geared or gearless
- Ergonomic housing reduces cold air transmission to operator

MODEL	EXHAUST	FREE SPEED	ABRASIVE CAPACITY GRINDER	TYPE HOUSING	WEIGHT	LENGTH	AIR INLET SIZE
		R/MIN			LB	IN	IN
12L2384-B1	FRONT	20000	5/8" OR 3/4" W X 18" L SANDING BELT	COMPOSITE	2.43	15.0	1/4

All tools performance rated @ 90 psi / 620 kPa air pressure.

Minimum Hose I.D.: 1/4 in / 4.8 mm

Standard Equipment: No.80 and No.120 grit sanding belt or one medium grit non-woven belt, applicable wrenches, grease gun, gear lube

## 12-10 Series - Buffer - 200 Series Collet - Cleco Dotco

3,200 - 5,000 RPM 0.3 hp (0.22 kW)



- Ergonomic composite housing
- Parts interchangeable with numerous other Dotco products
- Lightweight and compact design with powerful geared motor

MODEL	COLLET SIZE	EXHAUST	FREE SPEED	ABRASIVE CAPACITY GRINDER	TYPE HOUSING	SPINDLE SIZE	WEIGHT	LENGTH	AIR INLET SIZE
			R/MIN				LB	IN	IN
12L1092-01	1/4 IN	REAR	3200	3" (75 MM) WIRE BRUSH   3" (75MM) BUFFING WHEEL	COMPOSITE	5/8" - 11 E	1.54	7.2	1/4
12L1093-01	1/4 IN	REAR	5000	3" (75 MM) WIRE BRUSH   3" (75MM) BUFFING WHEEL	COMPOSITE	5/8" - 11 E	1.54	7.2	1/4

All tools performance rated @ 90 psi / 620 kPa air pressure.

Minimum Hose I.D.: 1/4 in / 6.4 mm

Standard Equipment: Applicable collet, collet wrenches

## 12-42 Series - External Threaded Spindle - Cleco Dotco

3,400 RPM 1.7 hp (1.27 kW)



- High output motor for the most demanding applications
- Comfortable and ergonomic composite handle
- Includes auxiliary handle for optimum operator control
- Tool not supplied with backing pad as shown

MODEL	EXHAUST	TERMINATION	FREE SPEED	ABRASIVE CAPACITY GRINDER	TYPE HOUSING	WEIGHT	LENGTH	HEAD HEIGHT	AIR INLET SIZE
			R/MIN			LB	IN	IN	IN
12L4203-80	SIDE	5/8" - 11 E	3400	4" (100MM) WIRE BRUSH, 8" (200MM) BUFFING WHEEL	COMPOSITE	6.4	13.6	3.90	1/2
12L4206-80	SIDE	5/8" - 11 E	6000	9"(225MM) SANDING DISC	COMPOSITE	6.4	13.6	3.90	1/2
12L4207-80	SIDE	5/8" - 11 E	7200	7" (175MM) SANDING DISC	COMPOSITE	6.4	13.6	3.90	1/2

All tools performance rated @ 90 psi / 620 kPa air pressure.  
 Minimum Hose I.D.: 1/2 in / 12.7 mm  
 Standard Equipment: Nut, washer, spacer and wrenches

## Sanding Belts - Non-woven

Used on Cleco Dotco Belt Sanders

- Minimum order - 10 of any one belt



MODEL	ABRASIVE CAPACITY GRINDER 1	GRIT SIZE
14-1728	1/4" X 18"	EXTRA FINE
14-1729	1/4" X 18"	FINE
14-1730	1/4" X 18"	MEDIUM
14-1731	1/4" X 18"	COARSE
14-2327	3/4" X 18"	MEDIUM

Minimum order: 10 of any one belt

## Sanding Belts - Aluminum Oxide, Resin Bond

Used on Cleco Dotco Belt Sanders

- Minimum order - 10 of any one belt



MODEL	ABRASIVE CAPACITY GRINDER 1	GRIT SIZE
14-1344	1/2" X 12"	40
14-1345	1/2" X 12"	50
14-1346	1/2" X 12"	60
14-1348	1/2" X 12"	80
14-1350	1/2" X 12"	100
14-1352	1/2" X 12"	120
14-1355	1/2" X 12"	150
14-1358	1/2" X 12"	180
14-1360	1/2" X 12"	240
14-1362	1/2" X 12"	320
14-1582	1" X 12"	60
14-1583	1" X 12"	80
14-1585	1" X 12"	120
14-1588	1" X 12"	180
14-1590	1/4" X 12"	60
14-1591	1/4" X 12"	80
14-1593	1/4" X 12"	120
14-1596	1/4" X 12"	180
14-1642	1" X 24"	60
14-1648	1" X 24"	180

## Belt Sander Attachments - Cleco Dotco

Used on Cleco Dotco Belt Sanders - 12-12 and 12-13 Series

- 



MODEL	DESCRIPTION	SANDING AREA	ABRASIVE CAPACITY GRINDER 1	TOOL SERIES	TERMINATION
		IN			
14-1463	COATED ABRASIVE ATTACHMENTS	1" X 4"	1" X 12" SANDING BELT	12-12, 12-13	1/4 IN-28I
14-1473	COATED ABRASIVE ATTACHMENTS	1" X 4"	1" X 12" SANDING BELT	12-12, 12-13	300 IN
14-1603	COATED ABRASIVE ATTACHMENTS	1" X 10"	1" X 24" SANDING BELT	12-12, 12-13	1/4 IN-28I
14-1613	COATED ABRASIVE ATTACHMENTS	1" X 10"	1" X 24" SANDING BELT	12-12, 12-13	300 IN
14-1638	COATED ABRASIVE ATTACHMENTS	1/4" X 4"	1/4" X 12" SANDING BELT	12-12, 12-13	1/4 IN-28I
14-1639	COATED ABRASIVE ATTACHMENTS	1/4" X 4"	1/4" X 12" SANDING BELT	12-12, 12-13	300 IN
14-1715	NON-WOVEN ATTACHMENTS	1/2" X 6"	1/2" X 18" SANDING BELT	12-12	300 IN

## Spiralcool Backing Pads

For Cleco Dotco sanders with 5/8"-11 threaded spindles. Pad contour develops draft action to cool disc and avoid excessive pick-up.



- For Cleco Dotco sanders with 5/8"-11 threaded spindles.
- Pad contour develops draft action to cool disc and avoid excessive pick-up.

MODEL	DESCRIPTION	SPEED	DIAMETER
		R/MIN	IN
14-2115	FLEXIBILITY - FLEXIBLE	10000	5
14-2116	FLEXIBILITY - MEDIUM	10000	5
14-2117	FLEXIBILITY - RIGID	10000	5
14-2197	FLEXIBILITY - FLEXIBLE	12000	4
14-2198	FLEXIBILITY - MEDIUM	12000	4
14-2199	FLEXIBILITY - RIGID	12000	4
14-2200	FLEXIBILITY - MEDIUM	7000	7
14-2201	FLEXIBILITY - RIGID	7000	7
14-2202	FLEXIBILITY - FLEXIBLE	6000	9
14-2203	FLEXIBILITY - MEDIUM	6000	9
14-2255	FLEXIBILITY - FLEXIBLE	11000	4.5
14-2256	FLEXIBILITY - MEDIUM	11000	4.5
14-2257	FLEXIBILITY - RIGID	11000	4.5
14-2529	FLEXIBILITY - FLEXIBLE	7000	7



## Save-A-Disc Pads

For Cleco Dotco sanders with 5/8"-11 threaded spindles. Ribs on the backing plate cause a flexing action which throws off accumulation.

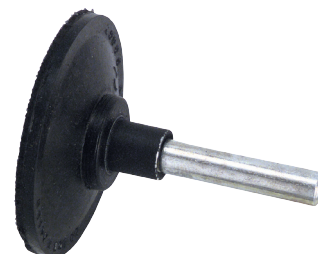


- For Cleco Dotco sanders with 5/8"-11 threaded spindles.
- Ribs on the backing plate cause a flexing action which throws off accumulation.

MODEL	DESCRIPTION	SPEED	DIAMETER
		R/MIN	IN
14-2515	PAD ASSEMBLY	7500	5
14-2517	PAD ASSEMBLY	7500	7
14-2519	PAD ASSEMBLY	7500	9
14-2521	PAD ONLY	7500	9
14-2522	PLATE ONLY	7500	5
14-2523	PLATE ONLY	7500	7
14-2525	NUT ONLY	7500	9

## PSA Disc Holders

adaptor Kit for 7" and 9" Depressed Center Wheels



- For Collet Chuck - Chuck the PSA disc holder shank directly into the appropriate collet (1/8" or 1/4")
- For Threaded Spindle - Remove the threaded shank from the PSA disc holder.
- Referring to the spindle adapter chart, select the correct spindle and thread it into the PSA holder.

MODEL	SHANK DIAMETER CAPACITY	DIAMETER	SPINDLE SIZE
		IN	
14-1105	1/4 IN	1/2	5-40 FEMALE
14-1107	1/4 IN	3/4	5-40 FEMALE
14-1110	1/4 IN	1	5-40 FEMALE
14-1111	1/4 IN	1-1/2	1/4"-20 FEMALE
14-1112	1/4 IN	2	1/4"-20 FEMALE
14-1113	1/4 IN	3	1/4"-20 FEMALE
14-1114	1/4 IN	4	1/4"-20 FEMALE
14-1146	1/8 IN	1/2	5-40 FEMALE
14-1147	1/8 IN	3/4	5-40 FEMALE
14-1170	1/8 IN	1	5-40 FEMALE

## Sanding Pad Nut

For use with Cleco Dotco sanders with 5/8"-11 threaded spindles



- For use with Cleco Dotco sanders with 5/8"-11 threaded spindles

MODEL	SPINDLE SIZE
14-2118	5/8"-11 THREADED SPINDLE

## Spanner Wrench

Used with 14-2118 Sanding Pad Nut

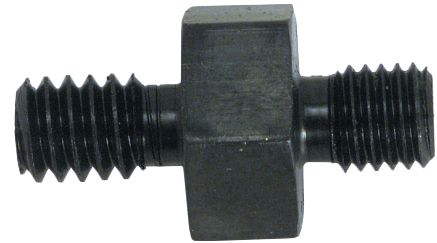


- 

MODEL	SPINDLE SIZE
14-2319	5/8"-11 THREADED SPINDLE

## Spindle Adapters

For use with PSA Disc holders



- For use with PSA Disc holders

MODEL	DESCRIPTION	THREAD FOR TOOL SPINDLE / PSA DISC HOLDER	MAX DISC DIAMETER
			IN
14-1142	TOOL SPINDLE THREAD / PSA DISC HOLDER THREAD	1/4"-28 MALE / 5-40 MALE	1
14-1144	TOOL SPINDLE THREAD / PSA DISC HOLDER THREAD	1/4"-28 MALE / 1/4"-20 MALE	4
14-1211	TOOL SPINDLE THREAD / PSA DISC HOLDER THREAD	5/8"-11 FEMALE / 3/8"-24 MALE	4
14-1212	TOOL SPINDLE THREAD / PSA DISC HOLDER THREAD	5/8"-11 MALE / 1/4"-20 MALE	4
14-2903	TOOL SPINDLE THREAD / PSA DISC HOLDER THREAD	5/8"-11 MALE / 5/16"-24 MALE	4

## 12-12 Series - Right Angle Routers

20,000 - 30,000 RPM 0.3 hp (0.22 kW)

- Available in both geared and gearless
- Multiple speed and power options available to find the right tool for the application



MODEL	EXHAUST	SHANK DIAMETER CAPACITY		FREE SPEED	DRIVE	WEIGHT	LENGTH	AIR INLET SIZE
		IN	R/MIN	LB				
12L1201-36RT	FRONT	1/4 IN	20000		GEARED 0.3 HP (0.22 KW)	1.76	6.5	1/4
12L1281-36RT	REAR	1/4 IN	20000		GEARED 0.3 HP (0.22 KW)	1.76	6.5	1/4
12L1300-36RT	FRONT	1/4 IN	30000		GEARLESS 0.3 HP (0.22 KW)	1.54	7.4	1/4
12L1380-36RT	REAR	1/4 IN	30000		GEARLESS 0.3 HP (0.22 KW)	1.54	7.4	1/4
12L1381-36RT	REAR	1/4 IN	25000		GEARLESS 0.3 HP (0.22 KW)	1.54	7.4	1/4

All tools performance rated @ 90psi / 620 kPa air pressure

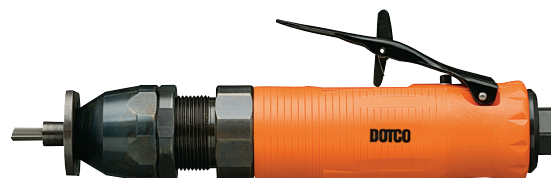
Minimum hose I.D.: 1/4in | 6.4 mm

Standard Equipment: Collet, applicable wrenches

## 10-10 & 12-10 Series - Inline Router

30,000 - 34,000 RPM 0.3 hp (0.22 kW)

- Tremendous power for the toughest portable routing operations
- Unique governor design assures minimum air consumption, maximum power all at correct speed and long motor life
- All models oil free



MODEL	EXHAUST	SHANK DIAMETER CAPACITY		FREE SPEED	TYPE HOUSING	WEIGHT	LENGTH	AIR INLET SIZE
		IN	R/MIN	LB				
10L1000-36RT	FRONT	1/4 IN	30000		ALUMINUM	1.32	6.7	1/4
12L1000-36RT	FRONT	1/4 IN	30000		COMPOSITE	1.32	6.7	1/4
12L1001-36RT	FRONT	1/4 IN	34000		COMPOSITE	1.32	6.7	1/4

All tools performance rated @ 90psi / 620 kPa air pressure.

Minimum Hose I.D.: 1/4in / 6.4mm

Standard Equipment: Collet, applicable wrenches

Specialty Tools

## 10-20 & 12-20 Series - Inline Router

20,000 - 25,000 RPM 0.6 hp (0.45 kW)

- Tremendous power for the toughest portable routing operations
- Unique governor design assures minimum air consumption, maximum power at correct speed and long motor life



MODEL	EXHAUST	SHANK DIAMETER CAPACITY	FREE SPEED	TYPE HOUSING	WEIGHT	LENGTH	AIR INLET SIZE
		IN	R/MIN		LB	IN	IN
12L2001-01RT	FRONT	1/4 IN	20000	COMPOSITE	1.98	7.5	1/4
10L2000-01RT	FRONT	1/4 IN	25000	ALUMINUM	1.76	0.63	1/4
12L2000-01RT	FRONT	1/4 IN	25000	COMPOSITE	1.98	7.5	1/4
12L2080-01RT	REAR	1/4 IN	25000	COMPOSITE	1.98	7.5	1/4
12L2081-01RT	REAR	1/4 IN	20000	COMPOSITE	1.98	7.5	1/4

All tools performance rated @ 90psi / 620 kPa air pressure.  
 Minimum Hose I.D.: 5/16in / 7.9mm  
 Standard Equipment: Collet, applicable wrenches

## 10-25 & 12-25 Series - Inline Router

18,000 - 23,000 RPM 0.9 hp (0.67 kW)

- Sustained power for any routing application
- Composite comfortable grip
- Roll value for easy operation



MODEL	EXHAUST	SHANK DIAMETER CAPACITY	FREE SPEED	TYPE HOUSING	WEIGHT	LENGTH	AIR INLET SIZE
		IN	R/MIN		LB	IN	IN
12L2502-01RT	FRONT	1/4 IN	18000	COMPOSITE	2.65	7.1	1/4
12L2582-0124RT	REAR	3/8 IN	18000	COMPOSITE	2.65	7.1	1/4
10L2500-01RT	FRONT	1/4 IN	23000	ALUMINUM	2.43	6.9	1/4
10L2580-01RT	REAR	1/4 IN	23000	ALUMINUM	2.43	6.9	1/4
12L2500-01RT	FRONT	1/4 IN	23000	COMPOSITE	2.65	7.1	1/4
12L2580-0124RT	REAR	3/8 IN	23000	COMPOSITE	2.65	7.1	1/4
12L2580-01RT	REAR	1/4 IN	23000	COMPOSITE	2.65	7.1	1/4
12L2582-01RT	REAR	1/4 IN	18000	COMPOSITE	2.65	7.1	1/4

All tools performance rated @ 90psi / 620 kPa air pressure.  
 Minimum Hose I.D.: 5/16in / 7.9mm  
 Standard Equipment: Collet, applicable wrenches

## 10-40 & 12-40 Series - Inline Router

18,000 RPM 1.7 hp (1.27 kW)



- Maximum power for larger routing application
- Tremendous power for the toughest portable routing operations
- Unique governor design assures minimum air consumption, maximum power at correct speed and long motor life
- All models oil free

MODEL	EXHAUST	SHANK DIAMETER CAPACITY	FREE SPEED	TYPE HOUSING	WEIGHT	LENGTH	AIR INLET SIZE
		IN	R/MIN		LB	IN	IN
10L4018-01	FRONT	1/4 IN	18000	ALUMINUM	4.19	11.3	1/2
12L4018-01	FRONT	1/4 IN	18000	COMPOSITE	4.19	11.3	1/2
12L4018-03	FRONT	3/8 IN	18000	COMPOSITE	4.19	11.3	1/2

All tools performance rated @ 90psi / 620 kPa air pressure.  
 Minimum Hose I.D.: 1/2in / 12.7mm  
 Standard Equipment: Collet, applicable wrenches

## 10-43 Series - Base Mount Router

9,000 - 18,000 RPM 1.7 hp (1.27 kW)



- Roll valve gives easy, convenient operation
- Cool running pneumatic motor - Stays cool even under heavy load
- Easy-to-use thumb throttle can be operated without releasing hand from handel
- Smooth accurate cuts - assured by precision spindle

MODEL	EXHAUST	SHANK DIAMETER CAPACITY	FREE SPEED	TYPE HOUSING	WEIGHT	LENGTH	AIR INLET SIZE
		IN	R/MIN		LB	IN	IN
10T4316-62	SIDE	1/2 IN	16000	ALUMINUM	7.5	7.1	1/2
10T4309-62	SIDE	1/2 IN	9000	ALUMINUM	7.5	7.1	1/2
10T4318-62	SIDE	1/2 IN	18000	ALUMINUM	7.5	7.1	1/2

All tools performance rated @ 90psi / 620 kPa air pressure.  
 Minimum Hose I.D.: 1/2in / 12.7mm  
 Standard Equipment: Collet, applicable wrenches

## 11-43 Series - Mountable Power Unit

18,000 RPM 1.7 hp (1.27 kW)

- Cool running pneumatic motor stays cool even under heavy load
- Flat top provides firm setting for changing cutters and making adjustments
- Smooth accurate cuts - assured by precision spindle



MODEL	EXHAUST	SHANK DIAMETER CAPACITY		FREE SPEED	TYPE HOUSING	WEIGHT	LENGTH	AIR INLET SIZE
		IN		R/MIN		LB	IN	IN
11T4316-62		1/2 IN		16000	ALUMINUM	5.5	7.1	1/2
11T4309-62	SIDE	1/2 IN		9000	ALUMINUM	5.5	7.1	1/2
11T4318-62	SIDE	1/2 IN		18000	ALUMINUM	5.5	7.1	1/2

All tools performance rated @ 90psi / 620 kPa air pressure.  
 Minimum Hose I.D.: 1/2in / 12.7mm  
 Standard Equipment: Collet, applicable wrenches

## Router Assemblies - Cleco Dotco

For use with Dotco 12-10, 12-20 and 12-25 series

- For use with Dotco 12-10, 12-20 and 12-25 series

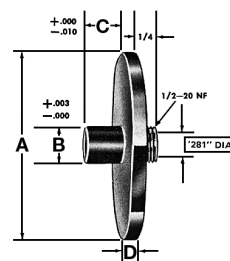


MODEL	DESCRIPTION	SHANK DIAMETER CAPACITY	TOOL SERIES
14-1180	ROUTER HOUSING	1/4 IN	12-10
14-2080	ROUTER HOUSING	3/8 IN	12-20, 12-25
14-2082	LOCK NUT	3/8 IN	12-20, 12-25
14-2176	NOSE HOUSING	1/4 IN	12-20, 12-25
14-2180	COMPLETE ATTACHMENT	1/4 IN	12-20, 12-25
14-2187	COMPLETE ATTACHMENT	1/4 IN	12-10
14-2426	NOSE HOUSING	3/8 IN	12-20, 12-25
14-2429	COMPLETE ATTACHMENT	3/8 IN	12-20, 12-25



## Router Guides For Router Bits with 3/8" Shanks

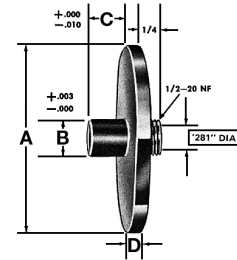
- For use on Dotco 12-10, 12-20, 12-20, 12-25 and 12-40 series.
- The minimum router bit length (OAL) to be used is determined by the formula:  $OAL = 1-13/16" + C + P$  (series 12-10);  $OAL = 2" + C + P$  (series 12-20 & 12-25). "C" is the "C" dimension of the router guide and "P" is the desired protrusion of the router bit.
- Important: Insert bit into collet as far as possible, then pull out 1/16" and tighten collet.
- In an emergency, if it is necessary to pull out the bit more than 1/4", be sure to insert a short length of blank shank (not to exceed 5/8" long) in the bottom of the collet before inserting the bit.



MODEL	DESCRIPTION	DIMENSION A	DIMENSION B	DIMENSION C	DIMENSION D
		IN	IN	IN	IN
14-2240	FOR ROUTER BITS WITH 3/8" SHANKS	2-1/2	3/8	3/8	1/8
14-2243	FOR ROUTER BITS WITH 3/8" SHANKS	2-1/2	5/8	3/8	1/8
14-2531	FOR ROUTER BITS WITH 3/8" SHANKS	1-1/2	1/2	3/8	1/8
14-2538	FOR ROUTER BITS WITH 3/8" SHANKS	1-1/2	1/2	1/2	1/8
14-2539	FOR ROUTER BITS WITH 3/8" SHANKS	1-1/2	1/2	5/8	1/8
14-2540	FOR ROUTER BITS WITH 3/8" SHANKS	1-1/2	9/16	3/8	1/8
14-2541	FOR ROUTER BITS WITH 3/8" SHANKS	1-1/2	9/16	1/2	1/8
14-2542	FOR ROUTER BITS WITH 3/8" SHANKS	1-1/2	9/16	5/8	1/8
14-2544	FOR ROUTER BITS WITH 3/8" SHANKS	1-1/2	5/8	5/8	1/8
14-2630	FOR ROUTER BITS WITH 3/8" SHANKS	2-1/2	9/16	1/2	1/8
14-2631	FOR ROUTER BITS WITH 3/8" SHANKS	2-1/2	5/8	5/8	1/8
14-2632	FOR ROUTER BITS WITH 3/8" SHANKS	2-1/2	1/2	1/2	1/8
14-2633	FOR ROUTER BITS WITH 3/8" SHANKS	2-1/2	1/2	5/8	1/8
14-2634	FOR ROUTER BITS WITH 3/8" SHANKS	2-1/2	9/16	3/8	1/8
14-2635	FOR ROUTER BITS WITH 3/8" SHANKS	2-1/2	9/16	5/8	1/8
14-2636	FOR ROUTER BITS WITH 3/8" SHANKS	2-1/2	5/8	1/2	1/8
14-2893	FOR ROUTER BITS WITH 3/8" SHANKS	1-1/2	5/8	3/8	1/8
14-2925	FOR ROUTER BITS WITH 3/8" SHANKS	1-1/2	5/8	1/2	1/8

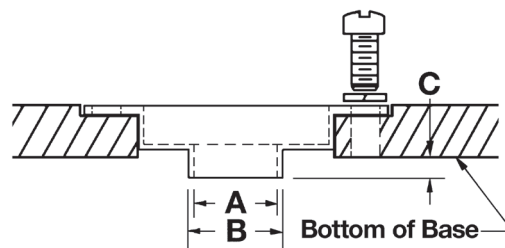
## Router Guides For Router Bits with 1/4" Shanks

- For use on Dotco 12-10, 12-20, 12-20, 12-25 and 12-40 series.
- The minimum router bit length (OAL) to be used is determined by the formula:  $OAL = 1-13/16" + C + P$  (series 12-10);  $OAL = 2" + C + P$  (series 12-20 & 12-25). "C" is the "C" dimension of the router guide and "P" is the desired protrusion of the router bit.
- Important: Insert bit into collet as far as possible, then pull out 1/16" and tighten collet.
- In an emergency, if it is necessary to pull out the bit more than 1/4", be sure to insert a short length of blank shank (not to exceed 5/8" long) in the bottom of the collet before inserting the bit.



MODEL	DESCRIPTION	DIMENSION A	DIMENSION B	DIMENSION C	DIMENSION D
		IN	IN	IN	IN
14-2400	FOR ROUTER BITS WITH 1/4" SHANKS	1	3/8	1/8	1/8
14-2401	FOR ROUTER BITS WITH 1/4" SHANKS	1	3/8	1/4	1/8
14-2402	FOR ROUTER BITS WITH 1/4" SHANKS	1	3/8	3/8	1/8
14-2406	FOR ROUTER BITS WITH 1/4" SHANKS	1	7/16	1/8	1/8
14-2407	FOR ROUTER BITS WITH 1/4" SHANKS	1	7/16	1/4	1/8
14-2408	FOR ROUTER BITS WITH 1/4" SHANKS	1	7/16	3/8	1/8
14-2411	FOR ROUTER BITS WITH 1/4" SHANKS	1	1/2	1/4	1/8
14-2412	FOR ROUTER BITS WITH 1/4" SHANKS	1	1/2	1/2	1/8
14-2413	FOR ROUTER BITS WITH 1/4" SHANKS	1	1/2	5/8	1/8
14-2414	FOR ROUTER BITS WITH 1/4" SHANKS	1	1/2	3/4	1/8
14-2417	FOR ROUTER BITS WITH 1/4" SHANKS	1	9/16	1/8	1/8
14-2420	FOR ROUTER BITS WITH 1/4" SHANKS	1	5/8	1/8	1/8
14-2421	FOR ROUTER BITS WITH 1/4" SHANKS	1	5/8	5/8	1/8
14-2500	FOR ROUTER BITS WITH 1/4" SHANKS	1-1/2	3/8	1/8	1/8
14-2501	FOR ROUTER BITS WITH 1/4" SHANKS	1-1/2	3/8	1/4	1/8
14-2502	FOR ROUTER BITS WITH 1/4" SHANKS	1-1/2	3/8	3/8	1/8
14-2505	FOR ROUTER BITS WITH 1/4" SHANKS	1-1/2	7/16	1/8	1/8
14-2506	FOR ROUTER BITS WITH 1/4" SHANKS	1-1/2	7/16	1/4	1/8
14-2507	FOR ROUTER BITS WITH 1/4" SHANKS	1-1/2	7/16	3/8	1/8
14-2510	FOR ROUTER BITS WITH 1/4" SHANKS	1-1/2	1/2	1/4	1/8
14-2511	FOR ROUTER BITS WITH 1/4" SHANKS	1-1/2	1/2	3/8	1/8
14-2512	FOR ROUTER BITS WITH 1/4" SHANKS	1-1/2	1/2	1/2	1/8
14-2600	FOR ROUTER BITS WITH 1/4" SHANKS	2-1/2	1/2	1/2	3/16
14-2703	FOR ROUTER BITS WITH 1/4" SHANKS	3/4	3/8	1/2	1/8

## 10-43 Series Router Template Guides



MODEL	DESCRIPTION	FOR USE WITH ROUTER BITS UP TO:	DIMENSION A	DIMENSION B	DIMENSION C
			IN	IN	IN
14-4019	ROUTER ACCESSORIES	1/4	5/16	3/8	3/16
14-4020	ROUTER ACCESSORIES	5/16	3/8	7/16	5/16
14-4021	ROUTER ACCESSORIES	1/2	9/16	5/8	3/16

## Rivet Trimmer Attachment

For use on Dotco 12-12 series front or rear exhaust collet models.

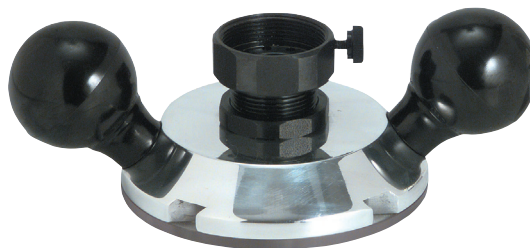
- For use on Cleco Dotco 12-12 series front or rear exhaust collet models.
- Trims “pop” or “blind” rivets up to 3/16” diameter, also suitable for shaving small welds.
- Micrometer adjustment controls height of cut to .001”.
- Runner pads minimize scratching of the work surface.



MODEL	DESCRIPTION	SHANK DIAMETER CAPACITY	RECOMMENDED USE	DIAMETER			LENGTH		
				IN	IN	MM	IN	MM	MM
14-1332	CUTTERS - CYLINDRICAL, CARBIDE	1/4 IN	SHAVING WELDS	1/2	1.88	47.625			
14-1723	TRIMMER								
14-1732	CUTTERS - INVERTED CONE, CARBIDE	1/4 IN	STEEL RIVETS	3/4	1.88	47.625			

## Two Handed Router Base

Easy depth adjustment. Can also be used with 10-43 template guides.

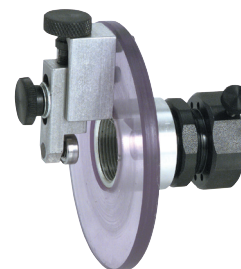


- Two handed control for router applications.
- Easy depth adjustment. Can also be used with 10-43 template guides.
- Cutters: 14-2442 (combination flush/bevel 22°)

MODEL	DESCRIPTION	TOOL SERIES
14-1577	USE WITH FRONT OR REAR EXHAUST COLLET MODELS	12-10
14-2577	USE WITH FRONT OR REAR EXHAUST COLLET MODELS	12-20, 12-25

## Laminate Trimmer Attachment

Used on Dcleco Dotco 12-10, 12-10 and 12-25 Series Routers



MODEL	DESCRIPTION	TOOL SERIES
14-1178	ROUTER ACCESSORIES	12-10
14-2178	ROUTER ACCESSORIES	12-20, 12-25

## 12-22 Series - Right Angle - Oscillating Saw

14,000 RPM 0.6 hp (0.45 kW)

- Available in right angle or inline
- Excellent control and high productivity with minimum fatigue
- Easy to change blades
- Adjustable depth control



MODEL	SAW BLADE CAPACITY		FREE SPEED	CONFIGURATION	TYPE HOUSING	MAXIMUM DEPTH OF CUT		WEIGHT	LENGTH	AIR INLET SIZE	EXHAUST
	IN	MM	R/MIN			IN	MM	LB	IN	IN	
12L2065-90	2.50	63.5	14000	INLINE	COMPOSITE	0.56	14.3	2.20	8.9	1/4	REAR
12L2240-90	2.50	63.5	14000	RIGHT ANGLE	COMPOSITE	0.56	14.3	2.20	10.9	1/4	REAR

All tools performance rated @ 90psi / 620 kPa air pressure.  
 Minimum Hose I.D.: 5/16in / 7.9mm  
 Standard Equipment: Applicable wrenches, oilless blades

## 12-12 Series - Saw

2,400 - 20,000 RPM 0.3 hp (0.22 kW)

- Vacuum ready
- Compact and easy to use
- Easy to change blades
- Adjustable depth control



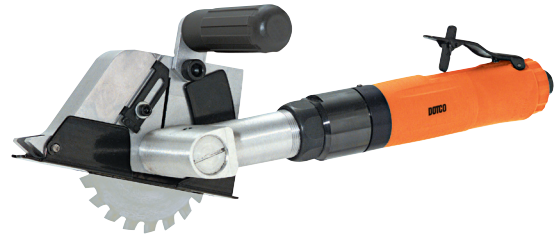
MODEL	SAW BLADE CAPACITY		FREE SPEED	TYPE HOUSING	MAXIMUM DEPTH OF CUT		WEIGHT	LENGTH	AIR INLET SIZE	EXHAUST
	IN	MM	R/MIN		IN	MM	LB	IN	IN	
12S1206-02	2.01	51	12000	COMPOSITE	0.43	11	1.32	7.1	1/4	FRONT
12S1273-03	2.01	51	12000	COMPOSITE	0.43	11	2.20	7.1	1/4	VACUUM READY
12S1282-02	2.01	51	12000	COMPOSITE	0.43	11	1.32	7.1	1/4	REAR
12S1207-02	2.01	51	20000	COMPOSITE	0.43	11	1.32	7.1	1/4	FRONT
12S1274-03	2.01	51	20000	COMPOSITE	0.43	11	2.20	7.1	1/4	VACUUM READY
12S1283-02	2.01	51	20000	COMPOSITE	0.43	11	1.32	7.1	1/4	REAR
12S1288-02	2.01	51	2400	COMPOSITE	0.43	11	1.54	8.9	1/4	REAR
12S1289-02	2.01	51	3600	COMPOSITE	0.43	11	1.54	8.9	1/4	REAR

All tools performance rated @ 90psi / 620 kPa air pressure.  
 Minimum Hose I.D.: 1/4in / 6.4mm  
 Standard Equipment: Applicable wrenches, oilless blades

## 12-27 Series - Saw

430 - 11,000 RPM 0.9 hp (0.67 kW)

- Compact and easy to use
- Excellent control and high productivity with minimum fatigue
- Easy to change blades



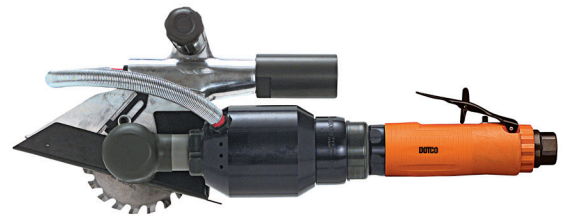
MODEL	SAW BLADE CAPACITY		FREE SPEED R/MIN	TYPE HOUSING	MAXIMUM DEPTH OF CUT		WEIGHT LB	LENGTH IN	AIR INLET SIZE IN	EXHAUST
	IN	MM			IN	MM				
12S2749-01	3.39	86	11000	COMPOSITE	1.00	25.4	4.9	11.4	1/4	FRONT
12S2793-02	4.02	102	3200	COMPOSITE	1.00	25.4	5.3	14.5	1/4	REAR
12S2790-02	4.02	102	430	COMPOSITE	1.00	25.4	6.2	16.2	1/4	REAR
12S2774-02	3.39	86	7000	COMPOSITE	1.00	25.4	6.4	14.1	1/4	VACUUM READY
12S2775-01	4.02	102	8500	COMPOSITE	1.00	25.4	7.3	14.1	1/4	VACUUM READY
12S2748-01	4.02	102	9000	COMPOSITE	1.00	25.4	4.9	11.4	1/4	FRONT
12S2792-02	3.39	86	940	COMPOSITE	1.00	25.4	6.2	16.2	1/4	REAR
12S2794-01	2.52	64	4700	COMPOSITE	0.56	14.3	4.63	13.2	1/4	REAR

All tools performance rated @ 90psi / 620 kPa air pressure.  
 Minimum Hose I.D.: 5/16in / 7.9mm  
 Standard Equipment: Applicable wrenches, oilless blades, 3/4in Arbor adapter

## 12-42 Series - Saw

5,800 - 8,600 RPM 1.7 hp (1.27 kW)

- Adjustable depth control
- Easy to change blades
- Compact and easy to use



MODEL	SAW BLADE CAPACITY		FREE SPEED R/MIN	TYPE HOUSING	MAXIMUM DEPTH OF CUT		WEIGHT LB	LENGTH IN	AIR INLET SIZE IN	EXHAUST
	IN	MM			IN	MM				
12S4216-01	4.02	102	5800	COMPOSITE	1.00	25.4	7.9	15.5	1/4	FRONT
12S4218-01	4.02	102	8600	COMPOSITE	1.00	25.4	7.9	15.5	1/4	FRONT
12S4225-03	4.02	102	8500	COMPOSITE	1.00	25.4	9.3	17.0	1/4	VACUUM READY

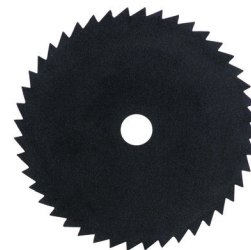
All tools performance rated @ 90psi / 620 kPa air pressure.  
 Minimum Hose I.D.: 1/2in / 12.7mm  
 Standard Equipment: Applicable wrenches, oilless blades, 3/4in Arbor adapter



## Saw Blades - 1/4" arbor hole

Used on Cleco Dotco Saw's

- Used for sawing non-metallic materials



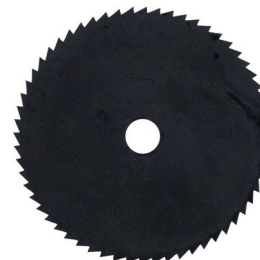
MODEL	DESCRIPTION	MAXIMUM DEPTH OF CUT	SPEED	DIAMETER	RECOMMENDED USE
		IN	R/MIN	IN	(GUIDELINES ONLY)
14-0930	HIGH SPEED STEEL 44 TEETH	3/32" X 1/16"	12000	1-1/4	FIBERGLASS, RUBBER
14-1395*	CARBIDE CHIP 36/80 GRIT	7/16" X 3/32"	20000	2	FIBERGLASS, RUBBER
14-1396*	CARBIDE CHIP 36/80 GRIT	7/32" X 3/32"	20000	1-1/2	FIBERGLASS, RUBBER
14-1398*	DIAMOND CHIP 40/60 GRIT	7/32" X 5/64"	20000	1-1/2	ALUMINUM, LAMINATED PLASTICS, PRESSED BOARD, WOOD
14-1400*	DIAMOND CHIP 40/60 GRIT	7/16" X 5/64"	20000	2	FIBERGLASS, RUBBER
14-1875	HIGH SPEED STEEL 22 TEETH	3/32" X 1/16"	12000	1-1/4	ALUMINUM, LAMINATED PLASTICS, PRESSED BOARD, WOOD
14-1890	HIGH SPEED STEEL 22 TEETH	7/16" X 1/16"	12000	2	ALUMINUM, LAMINATED PLASTICS, PRESSED BOARD, WOOD
14-1891	HIGH SPEED STEEL 44 TEETH	7/16" X 1/16"	12000	2	ALUMINUM, LAMINATED PLASTICS, PRESSED BOARD, WOOD
14-1892	HIGH SPEED STEEL 60 TEETH	7/16" X 1/16"	12000	2	ALUMINUM, LAMINATED PLASTICS, PRESSED BOARD, WOOD
14-1895	HIGH SPEED STEEL 22 TEETH	7/32" X 1/16"	12000	1-1/2	ALUMINUM, LAMINATED PLASTICS, PRESSED BOARD, WOOD

Note; \* CAUTION: Use only for sawing non-metallic materials

## Saw Blades - 7/16" arbor hole

Used on Cleco Dotco Saw's

- Used for sawing non-metallic materials



MODEL	DESCRIPTION	MAXIMUM DEPTH OF CUT	TOOL SERIES	DIAMETER	RECOMMENDED USE
		IN		IN	(GUIDELINES ONLY)
14-1887	HIGH SPEED STEEL 22 TEETH	7/16" X 1/16"	12S1288-04	2	ALUMINUM, LAMINATED PLASTICS, PRESSED BOARD, WOOD
14-1888	HIGH SPEED STEEL 44 TEETH	7/16" X 1/16"	12S1288-04	2	ALUMINUM, LAMINATED PLASTICS, PRESSED BOARD, WOOD
14-1889	HIGH SPEED STEEL 60 TEETH	7/16" X 1/16"	12S1288-04	2	ALUMINUM, LAMINATED PLASTICS, PRESSED BOARD, WOOD
14-2146	HIGH SPEED STEEL 80 TEETH	9/16	12S2793-01	2-1/2	16 GAUGE STEEL
14-2147	HIGH SPEED STEEL 44 TEETH	9/16	12S2794-01	2-1/2	1/4" ALUMINUM, 1/2" PLYWOOD, 1/2" PHENOLIC
14-2928	HIGH SPEED STEEL 60 TEETH	15/16"	12S2794-02	3-3/8	1/4" ALUMINUM, 1/2" PLYWOOD, 1/2" PHENOLIC
14-2929	HIGH SPEED STEEL 80 TEETH	15/16"	12S2792-02	3-3/8	20 GAUGE STEEL, PANELING, PLYWOOD

## Saw Blades - 3/4" arbor hole

Used on Cleco Dotco Saw's



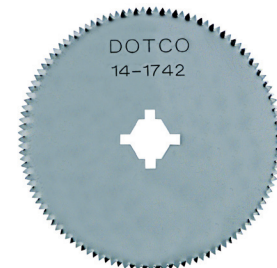
- Used for sawing non-metallic materials

MODEL	DESCRIPTION	MAXIMUM DEPTH OF CUT	DIAMETER	RECOMMENDED USE
		IN	IN	(GUIDELINES ONLY)
14-2690	DIAMOND CHIP 60/80 GRIT	1" X 5/64"	4	FIBERGLASS, COMPOSITE, CARBON FIBER
14-2694*	CARBIDE CHIP 36 GRIT	1" X 11/64"	4	HARD RUBBER
14-2697*	CARBIDE CHIP 80 GRIT	1" X 1/8"	4	FIBERGLASS
14-2699*	CARBIDE TIP 20 TEETH	1" X 7/64"	4	THIN FIBERGLASS, PLASTIC LAMINATES TO 1/8" THICK
14-2700*	CARBIDE TIP 20 TEETH	1" X 7/64"	4	THICKER FIBERGLASS, PLASTIC LAMINATES TO 1/2" THICK
14-2701*	CARBIDE CHIP 36/80 GRIT	1" X 1/8"	4	FIBERGLASS, HARD RUBBER
14-2710	CARBIDE TIP 20 TEETH	1" X 7/64"	4	THIN NON-FERROUS MATERIAL (TO APPROX . 1/8" THICK)
14-2711	CARBIDE TIP 12 TEETH	1" X 7/64"	4	THICKER NON-FERROUS MATERIAL (TO APPROX . 1/2" THICK)

Note; \* \*CAUTION: These carbide chip and tip and diamond blades are not to be used on metallic materials.  
 \*\*Slim blade for easy cutting of fiberglass, with minimum dust -36 grit on periphery and 80 grit on the sides.

## Saw Blades - oscillating saws with 3/8" arbor hole

Used on Cleco Dotco Oscillating Saw



- Used on 12-22 Series

MODEL	DESCRIPTION	MAXIMUM DEPTH OF CUT	DIAMETER	RECOMMENDED USE
		IN	IN	(GUIDELINES ONLY)
14-1740*	CARBIDE CHIP 36/80 GRIT	7/16" X 3/32"	2	FIBERGLASS
14-1741*	DIAMOND CHIP 40/60 GRIT	7/16" X 5/64"	2	FIBERGLASS, CARBON COMPOSITES
14-1742	STAINLESS STEEL 124 TEETH	9/16" X 3/64"	2-1/2	WOOD, UNCURED OR CURED COMPOSITES, ALUMINUM, PLASTIC
14-1743	CARBIDE 120 TEETH	9/16" X 1/16"	2-1/2	CURED GRAPHIC COMPOSITES
14-1744	RAZOR	9/16" X 3/64"	2-1/2	CARDBOARD, LIGHT PLASTIC
14-1745	STAINLESS STEEL 120 TEETH	9/16" X 3/64"	2-1/2	CONFINED SPACE
14-1746	FLUSH STAINLESS 124 TEETH	9/16" X 3/64"	2-1/2	WOOD, UNCURED OR CURED COMPOSITES, ALUMINUM, PLASTIC
14-1747	RAZOR	9/16" X 3/64"	3	CARDBOARD, LIGHT PLASTIC

Use only for sawing non-metallic materials. Note:

## Vacuum Conversion Kits 12-27 series

Converts front exhaust to a one of the configurations shown below

- Refer to the Vacuum Ready 12-27 Models in the catalog



MODEL	DESCRIPTION	TOOL SERIES
2704	OPTION 1 - PORTA BAG	12-27
2705	OPTION 2 - FLOOR BAG	12-27
2729	OPTION 3 - VACUUM SYSTEM ADAPTER	12-27

To convert an existing Cleco Dotco front exhaust series 12-27 saw to Vacuum operation, order any of the conversion kits listed in the table. NOTE: When converting to vacuum, free speed of the tool will be reduced 20%.

## Vacuum Conversion Kits 12-42 series

Converts front exhaust to a one of the configurations shown below

- Refer to the Vacuum Ready 12-42 Models in the catalog



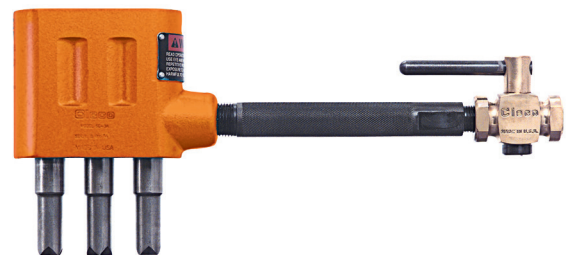
MODEL	DESCRIPTION	TOOL SERIES
4131	OPTION 1 - PORTA BAG	12-42
4132	OPTION 2 - FLOOR BAG	12-42
4133	OPTION 3 - VACUUM SYSTEM ADAPTER	12-42

To convert an existing Cleco Dotco front exhaust series 12-42 saw to Vacuum operation, order any of the conversion kits listed in the table. NOTE: When converting to vacuum, free speed of the tool will be reduced 20%.

## SC3A Series - Triple Scaler

Piston Type

- Piston Type
- For maximum material removal
- Heavy duty, rugged application



MODEL	BORE	STROKE	BLOWS PER MINUTE	AIR INLET SIZE	LENGTH	WEIGHT	AIR INLET SIZE
	IN	IN		IN	IN	LB	IN
SC3A	0.88	0.81	5200	3/8	13.3	7.9	3/8

All tools performance rated @ 90psi / 620 kPa air pressure.  
Minimum Hose I.D.: 3/8in / 9.6mm  
Standard Equipment: Operating instructions & service manual

## B1 Series - Lever Start - Needle Scaler

Built-in Chisel Retainer



- Built-in Chisel Retainer
- Front Exhaust
- Lever Start
- Needle Type

MODEL	BORE		STROKE	ABRASIVE CAPACITY	BLOWS PER MINUTE	AIR INLET SIZE	LENGTH	WEIGHT	RETAINER TYPE	AIR INLET SIZE
	IN	IN	IN			IN	IN	LB		IN
B1-CNB-LT-RD	1	1.1	5"   125 MM NEEDLES STANDARD, 7"   180 MM NEEDLES OPTIONAL		4600	1/4	15.0	6.4	PIN	1/4

All tools performance rated @ 90psi / 620 kPa air pressure.  
 Minimum Hose I.D.: 5/16in / 7.9mm  
 Standard Equipment: Operating instructions & service manual

## MP5187 - Lightweight Needle Scaler

Almost half the weight of standard models with similar BPM



- 4200 Blows per minute
- Compact design for work in close quarters
- Almost half the weight of standard models with similar BPM
- Precision heat treated needles for maximum performance

MODEL	BORE		STROKE	BLOWS PER MINUTE	AIR INLET SIZE		LENGTH	WEIGHT	AIR INLET SIZE
	IN	IN	IN		IN	IN	LB	IN	
MP5187	0.79	0.59		4200	1/4		8.9	2.5	1/4

General: Air Inlet 1/4" NPT Use 1/4" (9.6mm) I.D. Hose All tools performance rated @ 90psi (620 kPa) air pressure. Standard Equipment: MP5187: 12 needles, 1/8" (3mm) dia., 5" (125mm) long. Owners Manual, Parts sheet. Optional Equipment: MP5187: 8913300: 3mm x 7" carbon steel flat tip needle kit (12). 80074300: 3mm x 7" chisel tip needles. 71010300: (12) 3mm x 5" with 3mm needle holder

## B1 Series - Lever Start - Needle Scaler Kit

Kit Includes B1-CNB-LT-RD scaler, whip hose, extra set of needles, two chisels, extra chisel retainer, retainer parts and metal case.



- Kit Includes B1-CNB-LT-RD scaler, whip hose, extra set of needles, two chisels, extra chisel retainer, retainer parts and metal case.

MODEL	BORE		STROKE	ABRASIVE CAPACITY	BLOWS PER MINUTE	LENGTH		WEIGHT	RETAINER TYPE
	IN	IN	IN			IN	LB		
B1-CNB-LT-RD-K	0.04	1.1	5"   125 MM NEEDLES STANDARD, 7"   180 MM NEEDLES OPTIONAL		4600	15.0	6.4	BUILT-IN	

All tools performance rated @ 90psi / 620 kPa air pressure.  
 Minimum Hose I.D.: 5/16in / 7.9mm  
 Standard Equipment: Operating instructions & service manual

## B1 Series - Push-Pull Start - Chisel Scaler

### Built-in Chisel Retainer



- Built-in Chisel Retainer
- Chisel Type

MODEL	BORE	CHISEL	STROKE	ABRASIVE CAPACITY	BLOWS PER MINUTE	AIR INLET SIZE	LENGTH	WEIGHT	RETAINER TYPE
	IN	IN	IN			IN	IN	IN	
B1-C-PT	1	.500	1.1	1/2"   12.7 MM SQUARE STOCK	4600	1/4	12.0	4.41	BUILT-IN

All tools performance rated @ 90psi / 620 kPa air pressure.  
 Minimum Hose I.D.: 5/16in / 7.9mm  
 Standard Equipment: Operating instructions & service manual

## B Series - Lever Start - Chisel Scaler

### Built-in Chisel Retainer



- Built-in Chisel Retainer
- Chisel Type

MODEL	BORE IN	CHISEL IN	STROKE IN	ABRASIVE CAPACITY	BLOWS PER MINUTE	AIR INLET SIZE IN	LENGTH IN	WEIGHT LBS	RETAINER TYPE
B1-C-LT	1	.500	1.1	1/2"   12.7 MM SQUARE STOCK	4600	1/4	10.3	4.41	BUILT-IN
BR-C-LT	1	.625	1.1	5/8"   16 MM ROUND STOCK	4200	1/4	10.4	4.41	BUILT-IN

All tools performance rated @ 90psi / 620 kPa air pressure.  
 Minimum Hose I.D.: 5/16in / 7.9mm  
 Standard Equipment: Operating instructions & service manual

## MP5195 - Long Reach Scaler

Long reach scaler design for quick and easy stripping of dirt, grease, paint, glue, resins, floor coverings and tiles



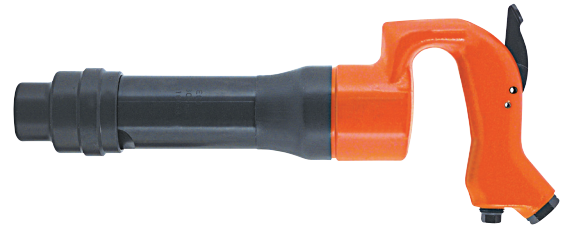
- 2200 Blows per minute
- For rugged scaling applications
- Long reach scaler design for quick and easy stripping of dirt, grease, paint, glue, resins, floor coverings and tiles
- Full Range of chisel blades

MODEL	STROKE	BLOWS PER MINUTE	LENGTH	PISTON DIAMETER	PISTON STROKE	WEIGHT
	IN		IN	IN	IN	LB
MP5195	1.5	2200	60	1.1	1.5	11.5

General: Air inlet 1/4" NPT for MP5195 Model. Use 1/4" (9.6mm) I.D. hose. All tools performance rated @ 90psi (620 kPa) air pressure. Standard Equipment: 51741 4" 5/8 hex chisel. Owners Manual, Parts list. Optional Accessories: 51741 4" chisel, 5/8 hex. 51742 2" chisel, 5/8 hex. 51743 8" scraper w/replaceable blade. 51744 12" scraper w/replaceable blade. 51745 2" alum. bronze non-spark pack. 51746 8" replacement blade for 51744 12" scraper. 51749 4" non-spark chisel

## CH30 Series Chipping Hammer

Heavy duty for rugged use



- Heavy duty for rugged use
- Ring valve hard hitting hammer
- Forged steel hammer
- Heat treated cylinder & piston for reduced wear
- Replaceable bushing

MODEL	BORE	CHISEL	STROKE	ABRASIVE CAPACITY	BLOWS PER MINUTE	AIR INLET SIZE	LENGTH	WEIGHT	AIR INLET SIZE
	IN	IN	IN			IN	IN	LB	IN
CH-30-HX	1.125	.580	2.5	.580 IN   14.7 MM HEX	2200	3/8	17.7	15.0	3/8
CH-30-RD	1.125	.680	2.5	.680 IN   17.3 MM ROUND SHANK	2200	3/8	17.7	15.0	3/8

All tools performance rated @ 90psi / 620 kPa air pressure.  
 Minimum Hose I.D.: 1/2in / 12.7mm  
 Standard Equipment: Operating instructions & service manual

## 12-20 Series - Nibbler

Great for tight access application

- Great for tight access application
- Suitable for general industry



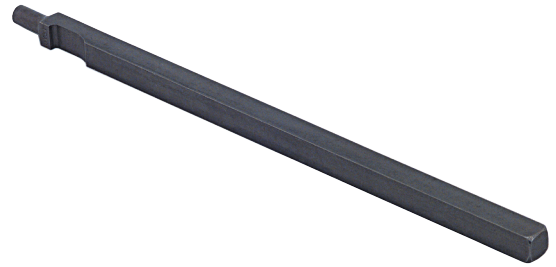
MODEL	CAPACITY	FREE SPEED	AIR INLET SIZE	LENGTH	WEIGHT	AIR INLET SIZE
		R/MIN	IN	IN	LB	IN
12L2062-96	18 GA. MILD STEEL	6	1/4	8.3	1.10	1/4

All tools performance rated @ 90psi / 620 kPa air pressure.



## B1 Series Chisels (Safety Retainer Type)

For use with B1 Series Chisels



MODEL	DESCRIPTION	CUTTING EDGE LENGTH		STOCK SIZE		LENGTH	
		IN	IN	IN	MM		
839050	SPOON CHISEL	1-3/8 IN	1/2 IN	7.3	184.15		
839051	COLD CHISEL	3/4 IN	1/2 IN	7.5	190.5		
839052	HARDENED BLANK		1/2 IN	7.5	190.5		
839053	HARDENED BLANK		1/2 IN	12.0	304.8		
839299	SPOON CHISEL	1-3/8 IN	1/2 IN	12.0	304.8		
839334	SPOON CHISEL	1-3/8 IN	1/2 IN	18.0	457.2		
839335	COLD CHISEL	3/4 IN	1/2 IN	18.0	457.2		
839341	COLD CHISEL	3/4 IN	1/2 IN	12.0	304.8		
839467	COLD CHISEL	1-1/2 IN	1/2 IN	8.0	203.2		
839740	SPOON CHISEL	1 IN	1/2 IN	7.3	184.15		

## BR Series Chisels (Safety Retainer Type)

For use with BR Series Chisels



MODEL	DESCRIPTION	DIAMETER		CUTTING EDGE LENGTH		STOCK SIZE		LENGTH	
		IN	IN	IN	IN	IN	MM		
829150	COLD	5/8		3/4 X 3/32	5/8 IN	8.5	215.9		
829165	LONG WIDE BLADE	5/8		1-3/4 X 3/32	5/8 IN	7.0	177.8		
829173	BLANK	5/8			5/8 IN	7.5	190.5		
829301	SCALING	5/8		1-1/4 X 3/32	5/8 IN	9.0	228.6		
829310	SPOON	5/8		1-3/8 X 3/32	5/8 IN	7.5	190.5		

## Air Hoses - Cleco Dotco

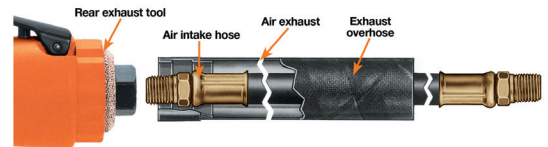


MODEL	DESCRIPTION	FITTINGS (NPT)	TOOL SERIES	DIAMETER		LENGTH	
				IN	FT	M	
45-0948	AIR HOSE	1/4	10-04, 12-03, 12-04	1/4	5.0	1.524	
45-1409	AIR HOSE	1/8 - 1/4	10-10, 10-11, 10-12	1/4	8.0	2.4384	
45-1810	AIR HOSE	3/8 - 1/2		1/2	10.0	3.048	
46-1610	AIR HOSE	3/8 - 3/8		3/8	10.0	3.048	
A110026	AIR HOSE	1/8 - 3/8-24		3/16	6.0	1.8288	
A139856	AIR HOSE	1/8 - 1/8		3/16	6.0	1.8288	

3/16" & 1/4" hoses have braided covers, all others have neoprene covers.

## Overhose - Cleco Dotco

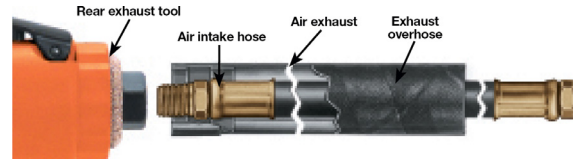
- For use with Dotco series rear exhaust tools



MODEL	DESCRIPTION	TOOL SERIES	LENGTH	
			FT	M
45-0945	OVERHOSE ONLY	10-04	1.0	0.3048
45-0955	OVERHOSE ONLY	10-04	2.0	0.6096
45-0956	OVERHOSE ONLY	10-04	4.0	1.2192
45-0974	OVERHOSE ONLY	12-91	4.0	1.2192
45-1901	OVERHOSE ONLY	10-10, 10-11, 10-12	4.0	1.2192
45-1902	OVERHOSE ONLY	10-10, 10-11, 10-12	8.0	2.4384
45-1904	OVERHOSE ONLY	10-10, 10-11, 10-12	2.0	0.6096
45-2629	OVERHOSE ONLY	10-20, 10-21, 10-22, 10-25, 10-26, 10-27, 12-20, 12-21, 12-22, 12-25, 12-26, 12-27, 12-28, 15LS, 15LN, 12-10, 12-11, 12-12, 12-13, 15LF, 15-14	2.0	0.6096
45-2687	OVERHOSE ONLY	10-20, 10-21, 10-22, 10-25, 10-26, 10-27, 12-20, 12-21, 12-22, 12-25, 12-26, 12-27, 12-28, 15LS, 15LN, 12-10, 12-11, 12-12, 12-13, 15LF, 15-14, 14CF, 14CS, 14CN	4.0	1.2192
45-2688	OVERHOSE ONLY	10-20, 10-21, 10-22, 10-25, 10-26, 10-27, 12-20, 12-21, 12-22, 12-25, 12-26, 12-27, 12-28, 15LS, 15LN, 12-10, 12-11, 12-12, 12-13, 15LF, 15-14, 14CF, 14CS, 14CN	8.0	2.4384
45-6001	OVERHOSE ONLY	12-03, 12-04	4.0	1.2192
45-6002	OVERHOSE ONLY	12-03, 12-04	2.0	0.6096
45-6003	OVERHOSE ONLY	12-03, 12-04	1.0	0.3048

## Overhose Assemblies and Conversion Kits - Cleco Dotco

For Use with Cleco Dotco Series rear exhaust tools



MODEL	DESCRIPTION	TOOL SERIES	LENGTHS
45-0946	INCLUDES 45-0945 OVERHOSE AND 45-0948 AIRHOSE	10-04	1.0 FT   0.3 M OVERHOSE 5.0 FT   1.5 M AIRHOSE
45-0953	INCLUDES 45-0955 OVERHOSE AND 45-0948 AIRHOSE	10-04	2.0 FT   0.6 M OVERHOSE 5.0 FT   1.5 M AIRHOSE
45-0954	INCLUDES 45-0956 OVERHOSE AND 45-0948 AIRHOSE	10-04	4.0 FT   1.2 M OVERHOSE 5.0 FT   1.5 M AIRHOSE
45-1930	INCLUDES 45-1904 OVERHOSE AND 45-1409 AIRHOSE	10-10, 10-11, 10-12	2.0 FT   0.6 M OVERHOSE 8.0 FT   2.4 M AIRHOSE
45-1931	INCLUDES 45-1901 OVERHOSE AND 45-1409 AIRHOSE	10-10, 10-11, 10-12	4.0 FT   1.2 M OVERHOSE 8.0 FT   2.4 M AIRHOSE
45-1932	INCLUDES 45-1902 OVERHOSE AND 45-1409 AIRHOSE	10-10, 10-11, 10-12	8.0 FT   2.4 M OVERHOSE 8.0 FT   2.4 M AIRHOSE
45-2783	NON-OVERHOSE TO OVERHOSE CONVERSION KIT. INCLUDES 45-2629 OVERHOSE AND 45-1408 AIRHOSE	12-10, 12-11, 12-12, 12-13, 15LF, 15-14	2.0 FT   0.6 M OVERHOSE 8.0 FT   2.4 M AIRHOSE
45-2784	NON-OVERHOSE TO OVERHOSE CONVERSION KIT. INCLUDES 45-2687 OVERHOSE AND 45-1408 AIRHOSE	12-10, 12-11, 12-12, 12-13, 15LF, 15-14	4.0 FT   1.2 M OVERHOSE 8.0 FT   2.4 M AIRHOSE
45-2785	NON-OVERHOSE TO OVERHOSE CONVERSION KIT. INCLUDES 45-2688 OVERHOSE AND 45-1408 AIRHOSE	12-10, 12-11, 12-12, 12-13, 15LF, 15-14	8.0 FT   2.4 M OVERHOSE 8.0 FT   2.4 M AIRHOSE
45-2786	NON-OVERHOSE TO OVERHOSE CONVERSION KIT. INCLUDES 45-2629 OVERHOSE AND 45-1508 AIRHOSE	10-20, 10-21, 10-22, 10-25, 10-26, 10-27, 12-20, 12-21, 12-22, 12-25, 12-26, 12-27, 12-28, 15LS, 15LN	2.0 FT   0.6 M OVERHOSE 8.0 FT   2.4 M AIRHOSE
45-2787	NON-OVERHOSE TO OVERHOSE CONVERSION KIT. INCLUDES 45-2687 OVERHOSE AND 45-1508 AIRHOSE	10-20, 10-21, 10-22, 10-25, 10-26, 10-27, 12-20, 12-21, 12-22, 12-25, 12-26, 12-27, 12-28, 15LS, 15LN	4.0 FT   1.2 M OVERHOSE 8.0 FT   2.4 M AIRHOSE
45-2788	NON-OVERHOSE TO OVERHOSE CONVERSION KIT. INCLUDES 45-2688 OVERHOSE AND 45-1508 AIRHOSE	10-20, 10-21, 10-22, 10-25, 10-26, 10-27, 12-20, 12-21, 12-22, 12-25, 12-26, 12-27, 12-28, 15LS, 15LN	8.0 FT   2.4 M OVERHOSE 8.0 FT   2.4 M AIRHOSE
45-6000	INCLUDES 45-6001 OVERHOSE AND 45-0948 AIRHOSE	12-03, 12-04	4.0 FT   1.2 M OVERHOSE 5.0 FT   1.5 M AIRHOSE
45-6012	INCLUDES 45-6002 OVERHOSE AND 45-0948 AIRHOSE	12-03, 12-04	2.0 FT   0.6 M OVERHOSE 5.0 FT   1.5 M AIRHOSE
45-6013	INCLUDES 45-6003 OVERHOSE AND 45-0948 AIRHOSE	12-03, 12-04	1.0 FT   0.3 M OVERHOSE 5.0 FT   1.5 M AIRHOSE

Accessories

## Activeswivel Cleco Dotco

Available for 1/4" NPT inlet only



MODEL	DESCRIPTION	AIR FLOW VOLUME	MAX PRESSURE	WEIGHT		AIR INLET SIZE
		SCFM	LB/IN <sup>2</sup>   BAR	LB	KG	IN
SW-102	ACTIVESWIVEL	25 M <sup>3</sup> /M	150	0.200	0.0907185	1/4

## Lubricants

PART NUMBER	SIZE	DESCRIPTION	M.S.D.S. NO.	TABLE SORT ORDER
45-0918	1 QT. PLASTIC	LUBRICATING OIL - QT.	CPT-155	4
45-0919	1 GAL. METAL	LUBRICATING OIL - GAL.	CPT-155	5
45-0980	2 OZ. TUBE	MOLY-XL 250 OIL ANGLE HEAD GEAR GREASE FOR GRINDERS	CPT-148	9
45-0983	2 OZ. TUBE	DOTCO PLANETARY GEAR GREASE FOR GRINDERS & SANDERS	CPT-147	8
513156	18 OZ. CAN	MAGNALUBE-G ASSEMBLY TOOL TEFLON GREASE	CPT-145	7
533485	1 GAL. METAL	AIR TOOL OIL (500021) 1 GAL. CAN	CPT-153	2
535090		MR SERIES MOTORS - GEARING OIL 1 GAL. CAN		
536333	1 GAL. METAL	HIGH FILM STRENGTH OIL (FOR SEVERE USE) 1 GAL. CAN	CPT-154	3
539317	1 QT. PLASTIC	UNIVIS PULSE TOOL HYDRAULIC OIL	CPT-157	6
540397	1 QT. PLASTIC		CPT-153	1
60538		AIR LUBE 10W/NR AIR LINE OIL	CPT-153	
60539		AIR LUBE 10W/NR AIR LINE OIL	CPT-153	
633190		LUBE-A-TUBE		

Under normal conditions of use, lubrication products sold separately for or used within these tools should not cause an exposure hazard. Refer to the Material Safety Data Sheet M.S.D.S. for Safety and Disposal information. M.S.D.S. sheets shown in the chart are available upon request.

## Push Type Grease Gun Cleco Dotco

Cleco Dotco Lube sold seperately - see above

- Push Type Grease Gun

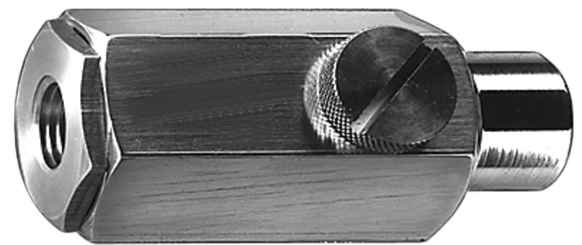


MODEL	DESCRIPTION
45-1982	GREASE GUN

## Airline Filter & Lubricator

Mounts in Hose Line.

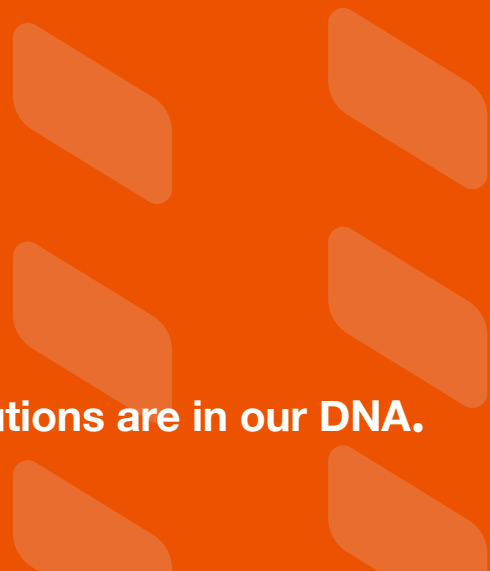
- One ounce reservoir good for average 8-hour shift.



MODEL	DESCRIPTION	MAX PRESSURE	AIR INLET SIZE
		LB/IN <sup>2</sup>   BAR	IN
45-0201	LUBRICATOR	100 LB/IN <sup>2</sup>   6.9 BAR	1/4
45-0301	LUBRICATOR	100 LB/IN <sup>2</sup>   6.9 BAR	3/8



**Solutions are in our DNA.**





**Solutions are in our DNA.**



# Our commitment to service spans the globe.



Have questions? Get answers and find the service center closest to you by visiting: [CLECOTOOLS.COM/CLECO-CARE](https://CLECOTOOLS.COM/CLECO-CARE)

## What is Cleco Care?

Cleco is known for producing great tools that your manufacturing facility depends on to keep your line running. Cleco stands behind our products and our partners by supporting your investment with on-going product service and support programs through Cleco Care.

Cleco Care provides a wide range of continued technical support and product expertise around the globe. Our Cleco Care Global Service Centers are committed to providing data-driven customer solutions to reduce total cost of ownership and down-time on your line. We offer a multitude of full-service Cleco Care programs that cover three major components of tool ownership: **Restore, Parts, and Support.**

## Restore

Our commitment to our customers starts with our warranties and extends to a range of services that minimize downtime and errors at your assembly plant.

- Repairs are performed with only OEM certified parts and the latest test equipment.
- Preventative maintenance programs tailored for your situation.
- Verification and calibration services.
- Upgrade or retrofitting kits to modernize discontinued or outdated equipment.

## Parts

Rely on our Cleco Care program for the parts you need, as soon as you need them. Our logistic partners offer world-wide shipments for spare parts and consumables. Our replacement parts program keeps you up and running when you need it most.

- OEM parts that meet our rigorous quality standards around the world.
- Cleco Care's data-driven analytics system predicts wear patterns before they can become problems so we can get you spare parts, fast.



## Support

Cleco Care includes a revitalized focus on support, enabling our partners through comprehensive installation and start-up services, specialized technical support, field servicing and top-quality training programs.

- Cleco Care covers every step of setup, programming, parameter-setting, operational support, and calibration.
- Our basic training classes cover all our products, and we offer specially designed trainings to integrate our tools with your software.

## Service Centers



### North America

**Detroit, Michigan**  
2630 Superior Court  
Auburn 48236  
United States  
1 (248) 391-3700

**Lexington, South Carolina**  
670 Industrial Drive  
Lexington 29072  
United States  
1 (800) 845-5629  
1 (803) 951-7510

**Queretaro, Mexico**  
Vialidad Del Pueblito 103  
Parque Industrial  
Querétaro, QRO 76220  
Mexico  
52 (442) 211 3800

### South America

**Sao Paulo, Brazil**  
Avenida Liberdade 4055  
Iporanga-Sorocaba 18087-170  
Brazil  
55 15 3238 3820

### Europe

**Westhausen, Germany**  
IndustriestraBe 1  
73463 Westhausen  
Germany  
49 (0) 73 63 81 0

### Asia

**Shanghai, China**  
No. 177 Bibo Road  
201, Area C  
Shanghai 201203  
China  
86 21 60880320

**India**  
Gala No. 1, Plot No. 5 S. No. 234, 235 & 245  
Indialand Global Industrial Park Taluka-Mulsi, Phase I  
Maharashtra 411057  
India  
91 020 66761111

# Solutions are in our DNA.

## Cleco®

Production Tools

Assembly Tools



## Cleco®

Production Tools

Material Removal



## Cleco®

Production Tools

Drilling & Riveting



## APEX®

ASSEMBLY & FABRICATION TOOLS

Fastening Solutions



Cleco® Production Tools  
607 Industrial Drive  
Lexington, SC 29072  
Phone: 800 845-5629  
Fax: 803 358 7681

[CLECOTOOLS.COM](http://CLECOTOOLS.COM)

© 2019 Cleco Production Tools. All Rights Reserved.